

Charlotte Harbor National Estuary Program Oyster Habitat Restoration Plan



Charlotte Harbor National Estuary Program Technical Report December 2012



1926 Victoria Avenue, Fort Myers FL 33901
(239) 338-2556 www.CharlotteHarborNEP.org

Prepared by:

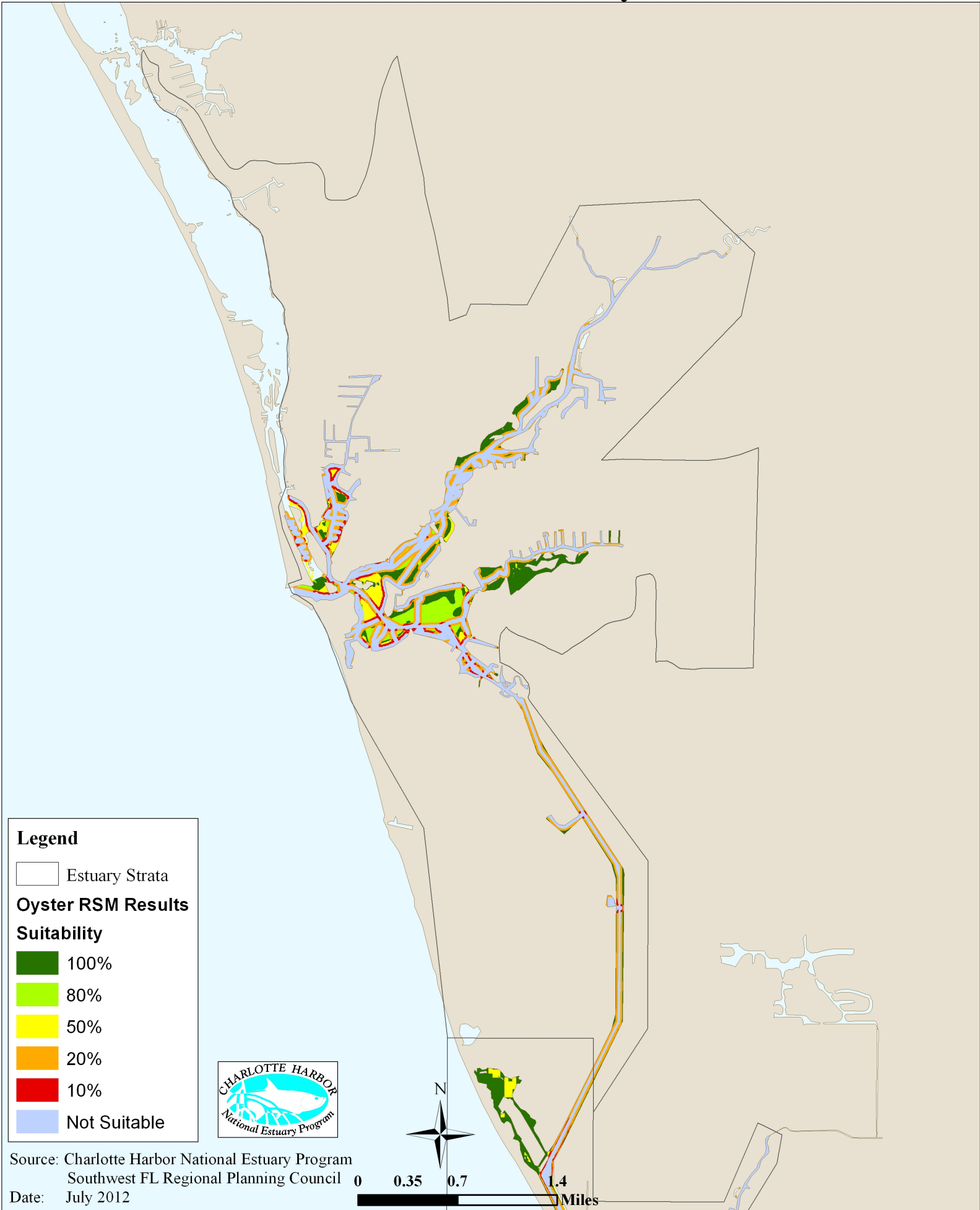
Jaime G. Boswell, Independent Contractor
Judy A. Ott, Charlotte Harbor National Estuary Program
Anne Birch, The Nature Conservancy
Daniel Cobb, Southwest Florida Regional Planning Council



Appendix D:

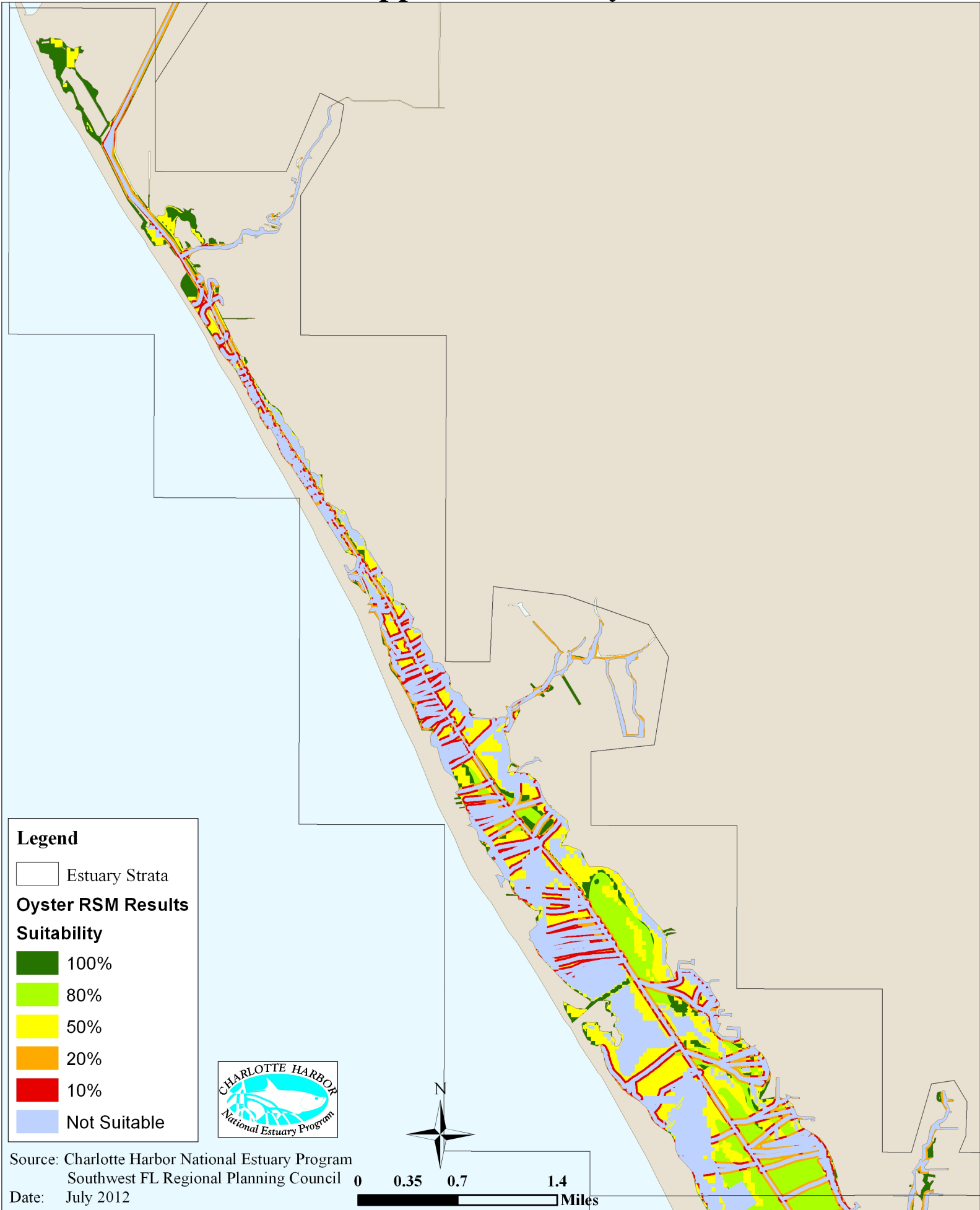
CHNEP Oyster Habitat Restoration Suitability Model Results for Each Estuary

CHNEP Oyster Restoration Suitability Model Results by Estuary Dona & Roberts Bays



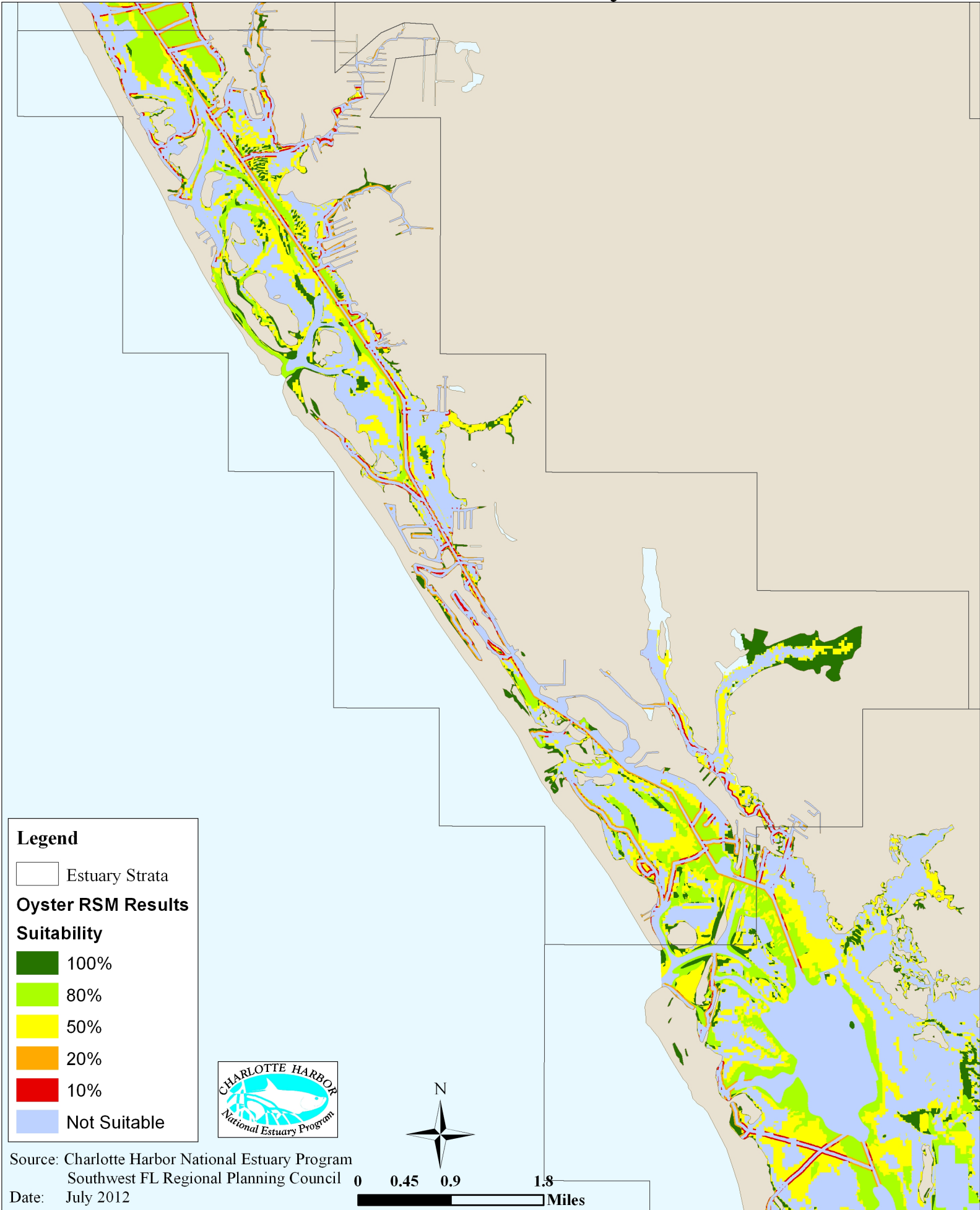
CHNEP Oyster Restoration Suitability Model Results by Estuary

Upper Lemon Bay



CHNEP Oyster Restoration Suitability Model Results by Estuary

Lower Lemon Bay



Legend

Estuary Strata

Oyster RSM Results

Suitability

100%

80%

50%

20%

10%

Not Suitable

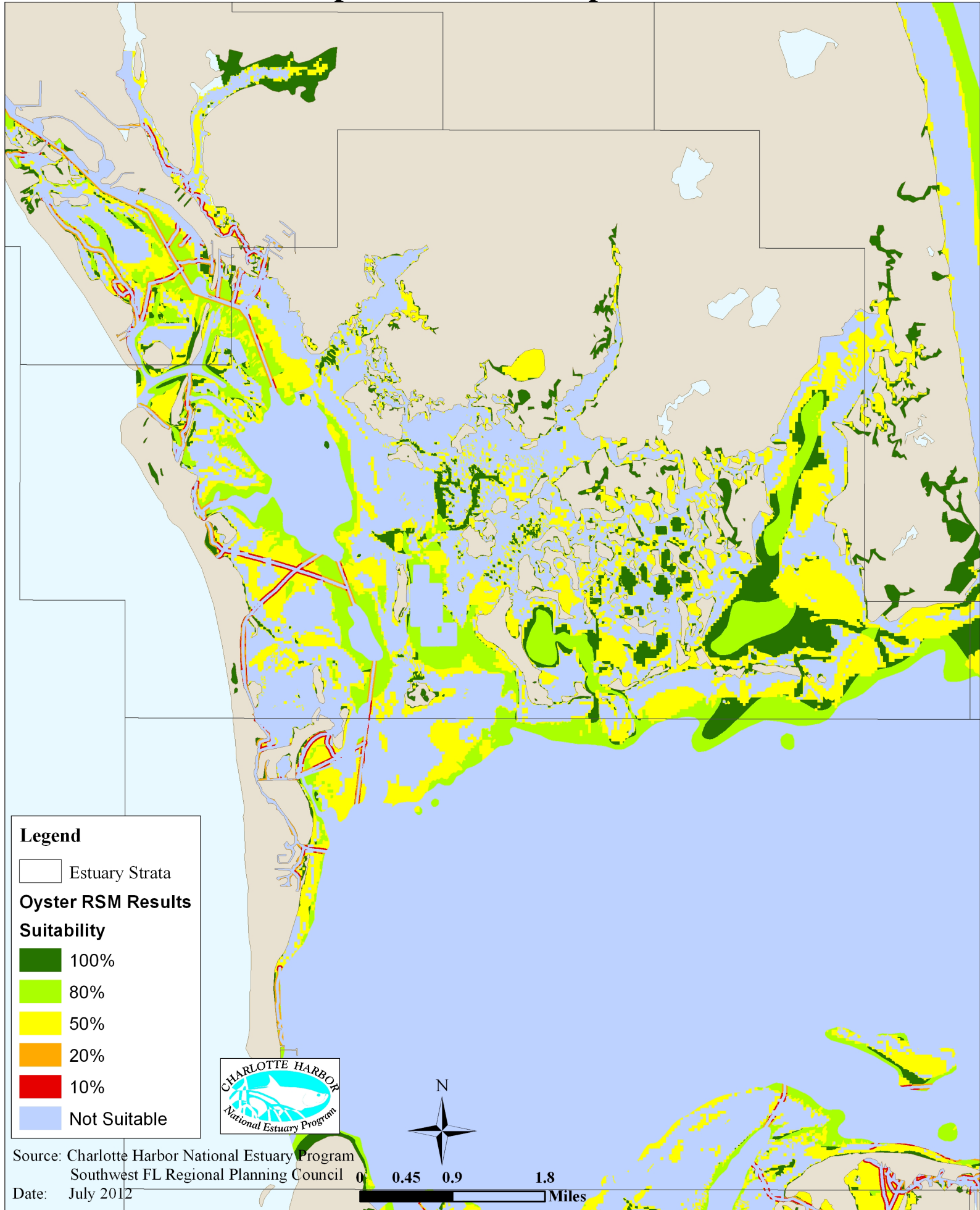


Source: Charlotte Harbor National Estuary Program
Southwest FL Regional Planning Council

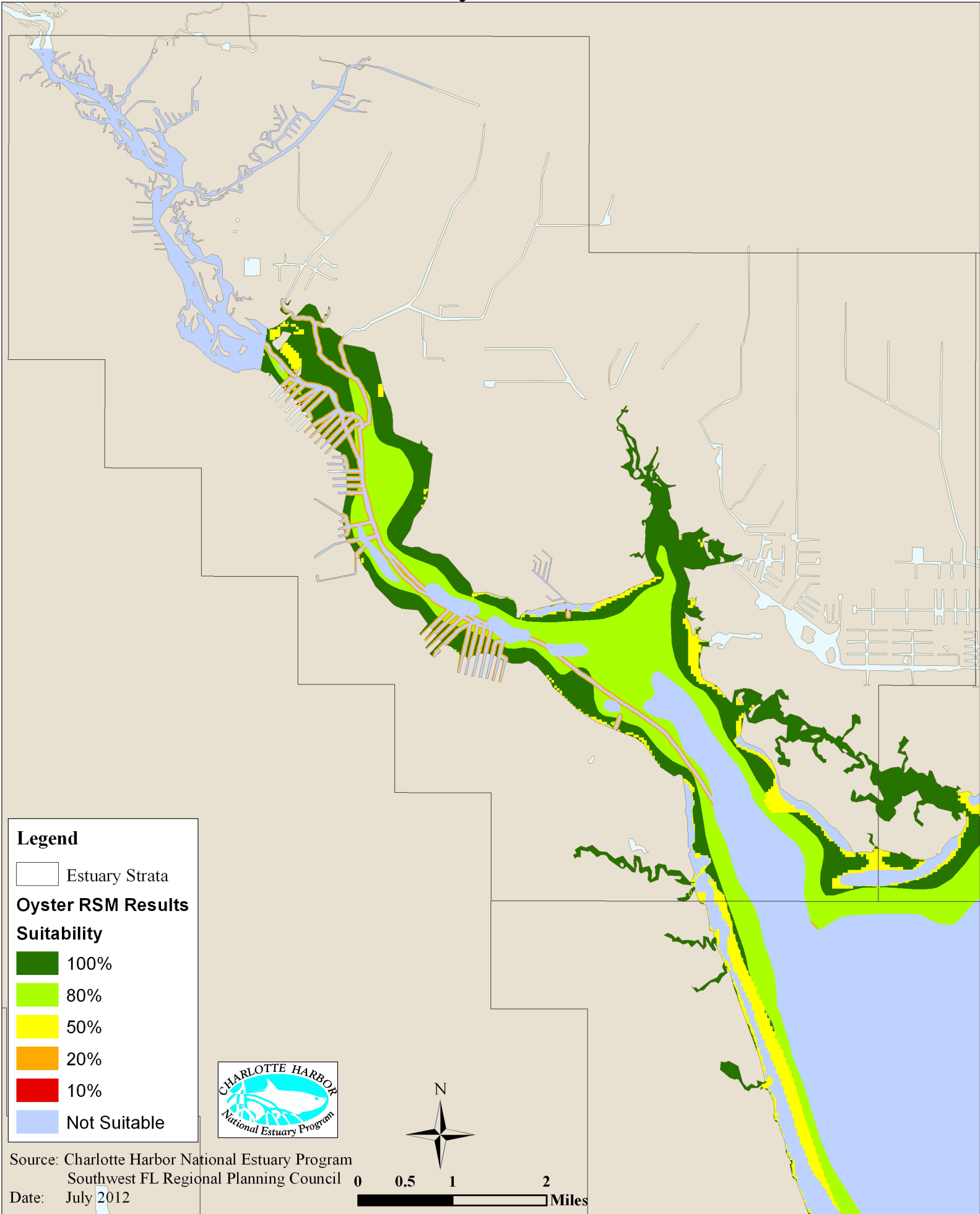
Date: July 2012

0 0.45 0.9 1.8
Miles

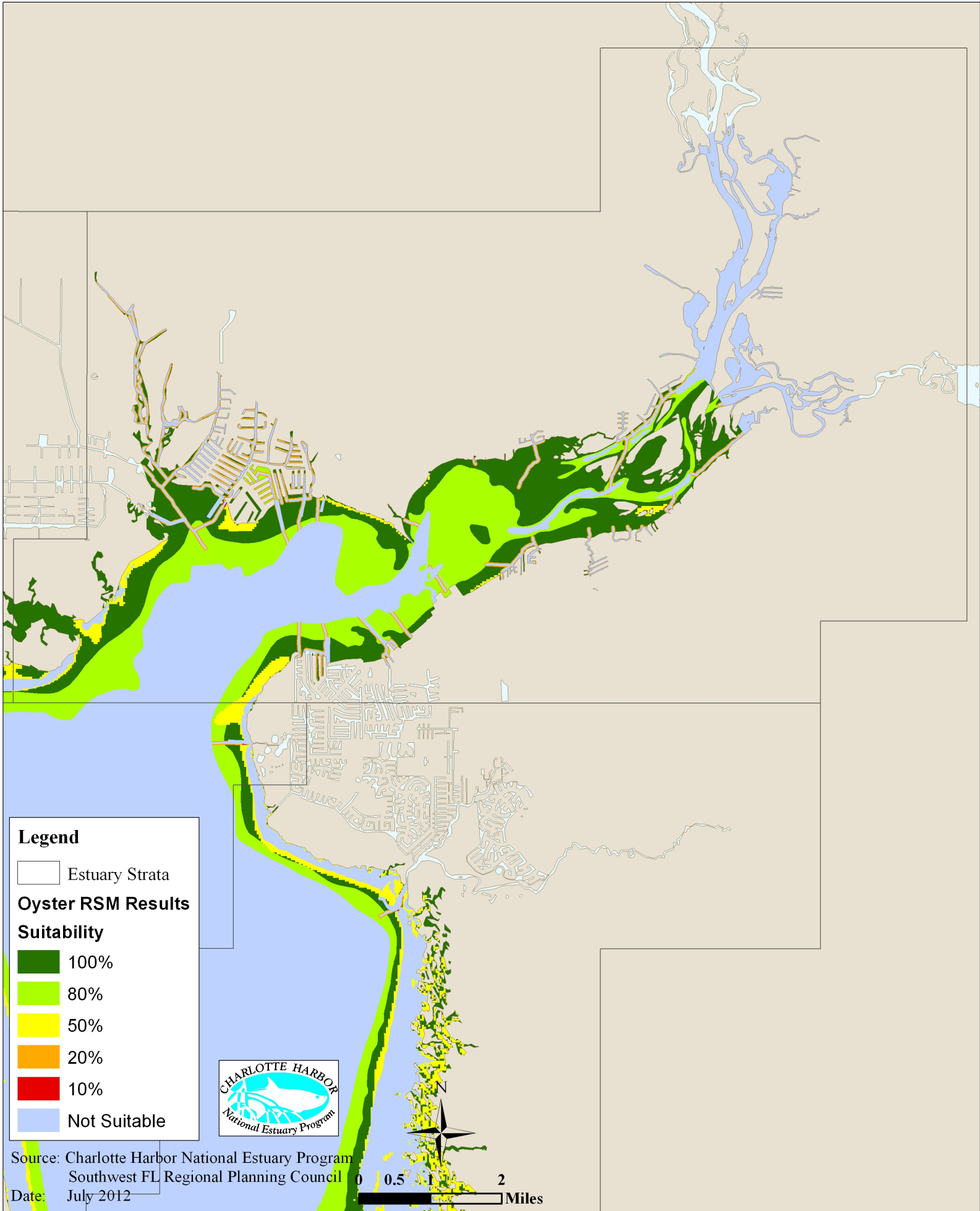
CHNEP Oyster Restoration Suitability Model Results by Estuary Gasparilla Sound-Cape Haze



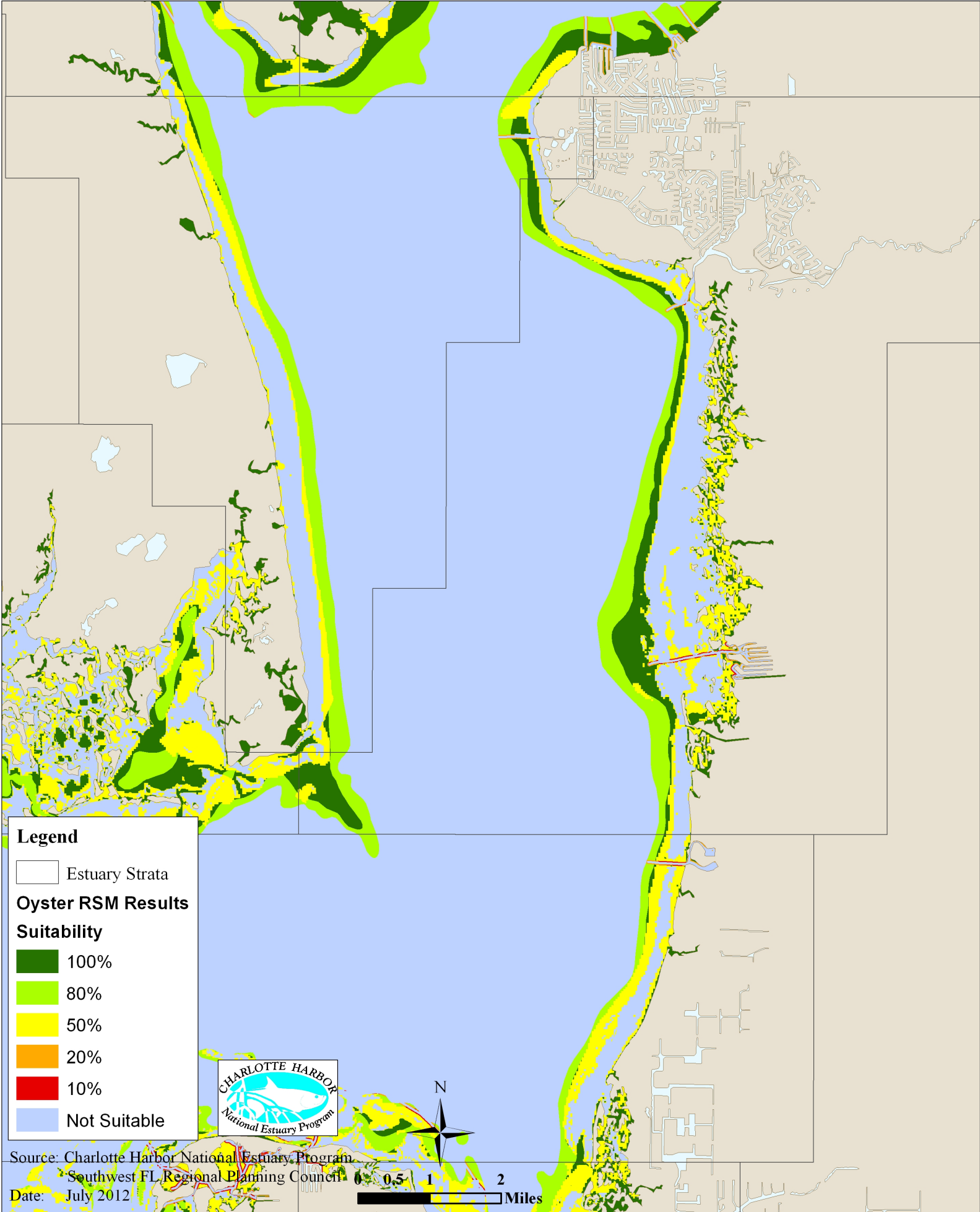
CHNEP Oyster Restoration Suitability Model Results by Estuary Tidal Myakka River



CHNEP Oyster Restoration Suitability Model Results by Estuary Tidal Peace River

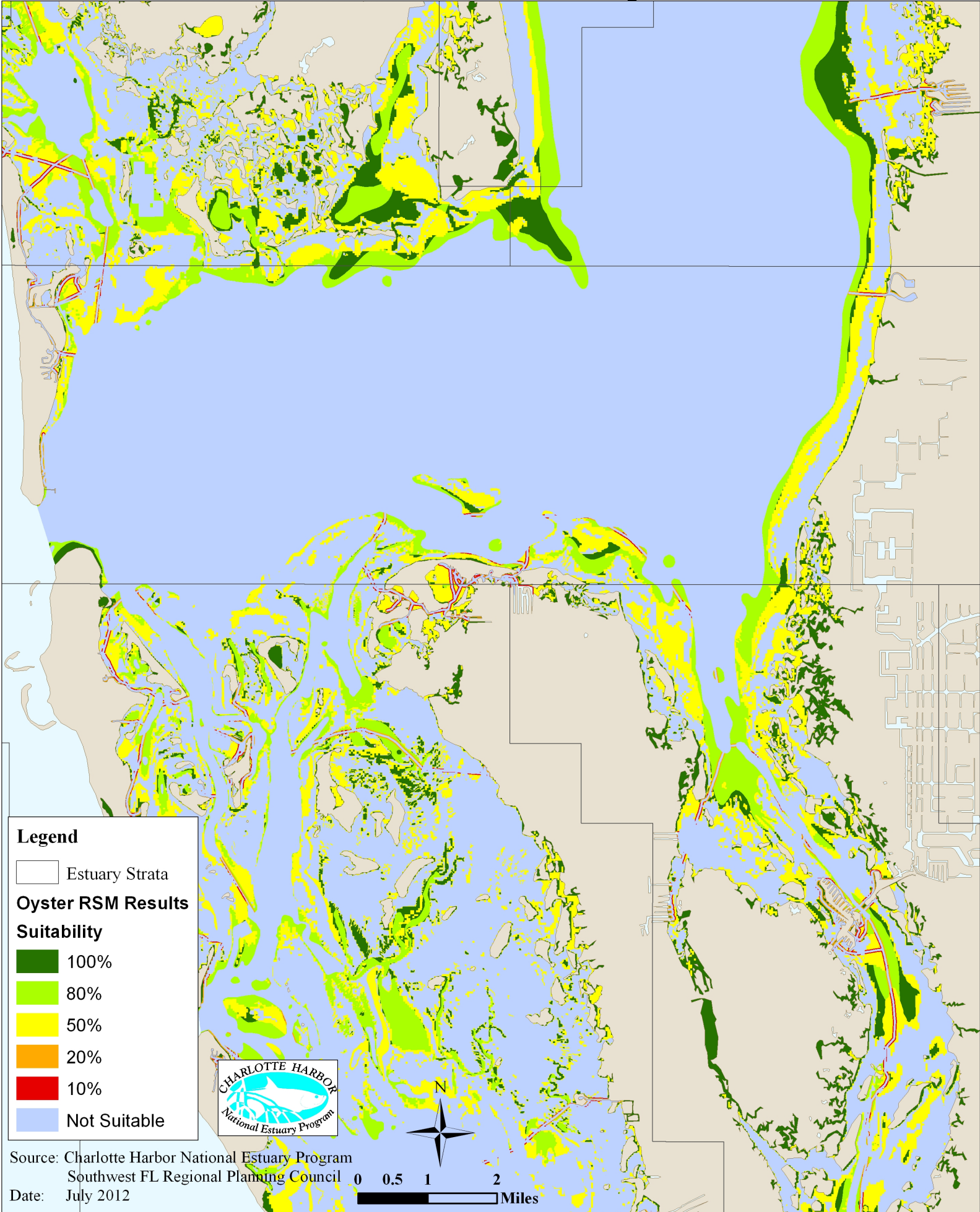


CHNEP Oyster Restoration Suitability Model Results by Estuary Charlotte Harbor West Wall & East Wall

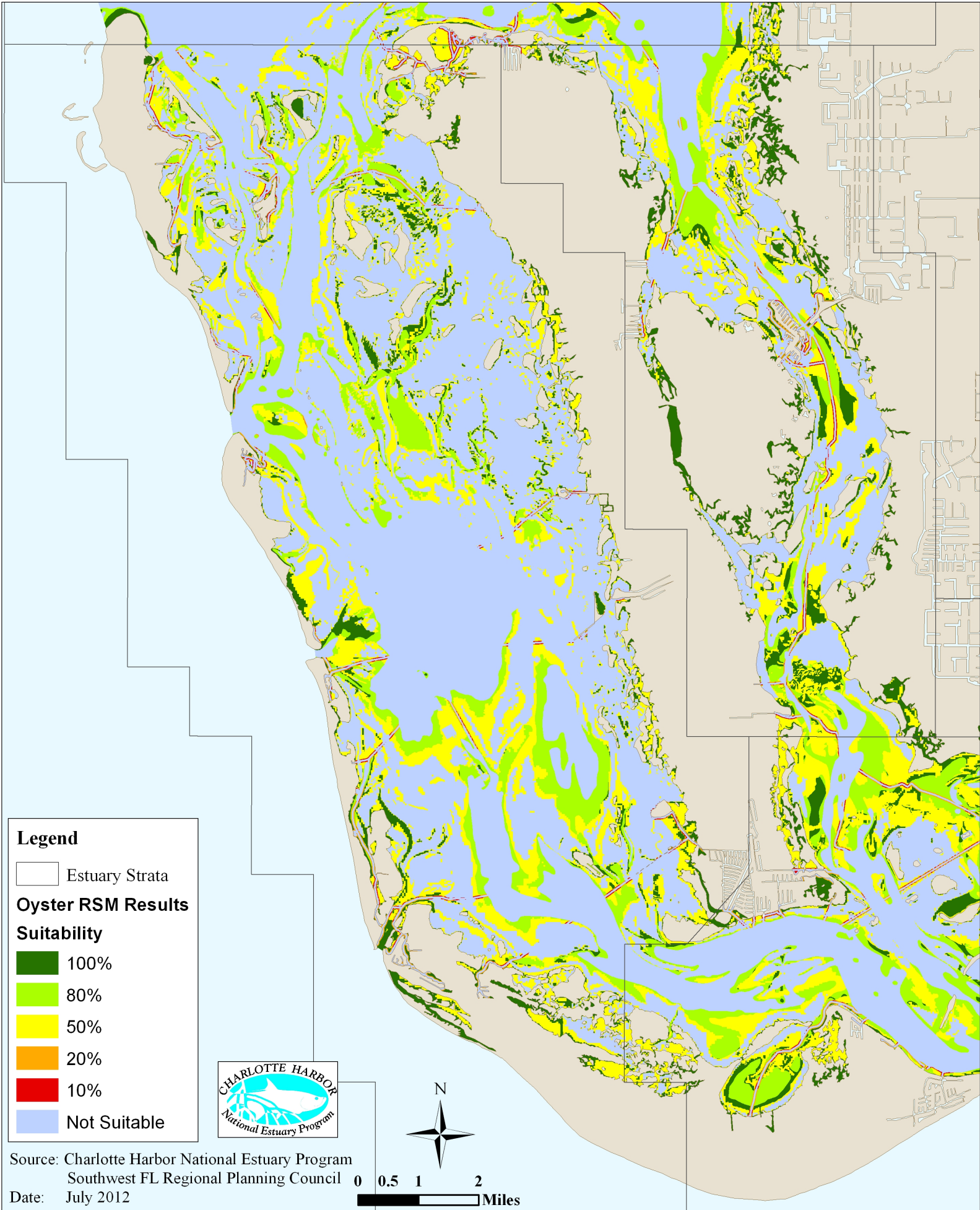


CHNEP Oyster Restoration Suitability Model Results by Estuary

Charlotte Harbor Proper



CHNEP Oyster Restoration Suitability Model Results by Estuary Pine Island Sound



Legend

Estuary Strata

Oyster RSM Results

Suitability

100%

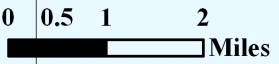
80%

50%

20%

10%

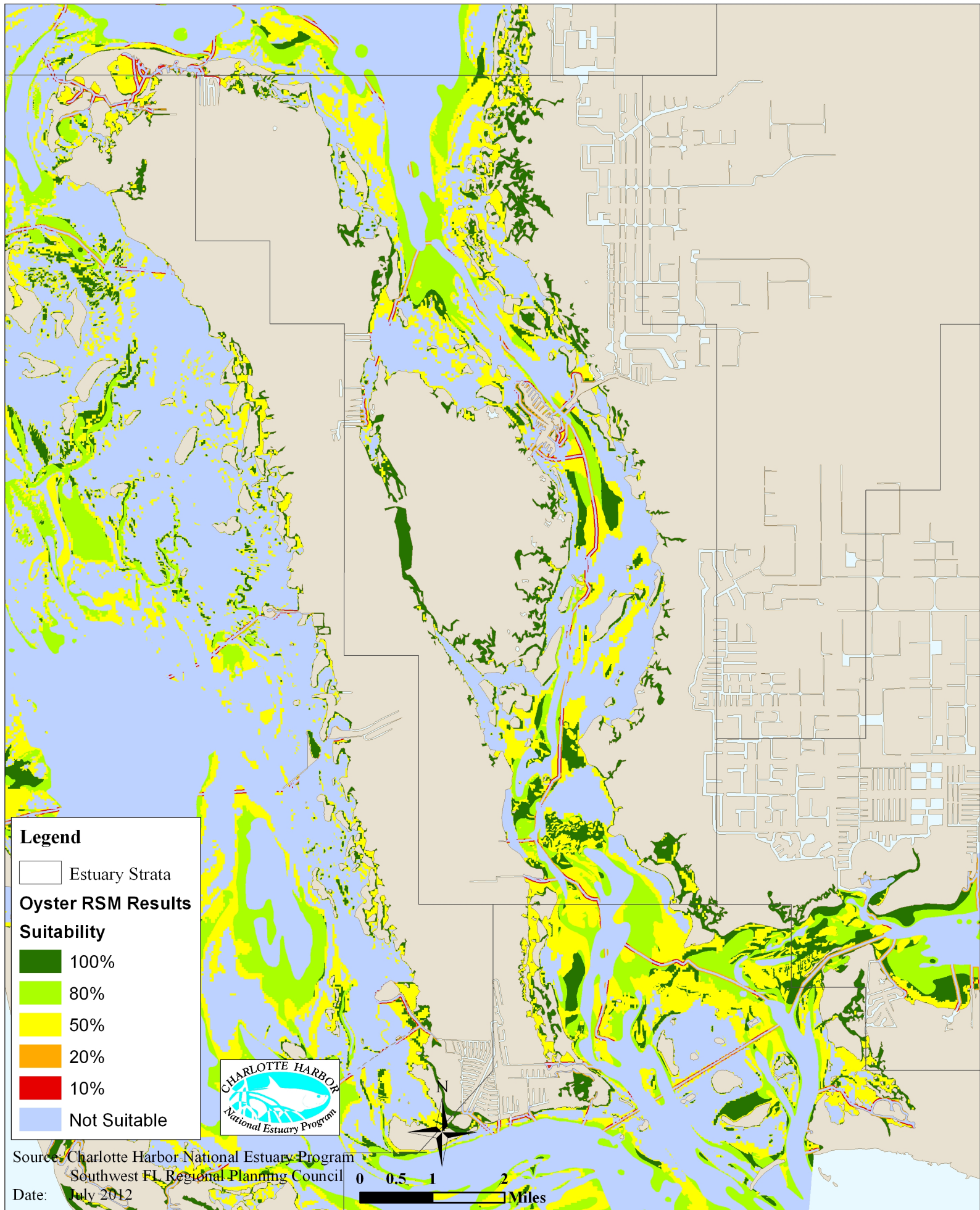
Not Suitable



Source: Charlotte Harbor National Estuary Program
Southwest FL Regional Planning Council

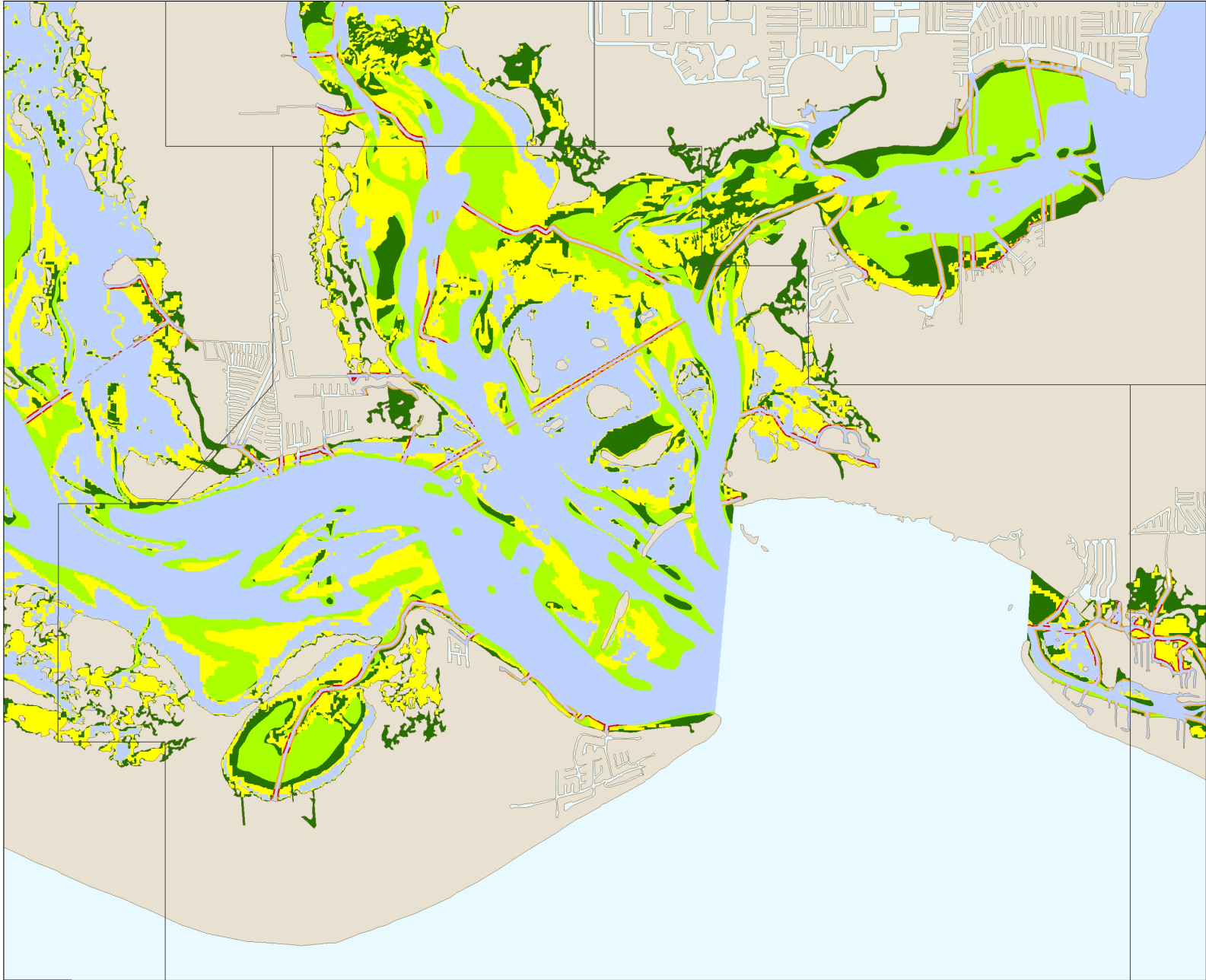
Date: July 2012

CHNEP Oyster Restoration Suitability Model Results by Estuary Matlacha Pass




CHNEP Oyster Restoration Suitability Model Results by Estuary

San Carlos Bay



Legend

 Estuary Strata

Oyster RSM Results

Suitability


 100%

 80%

 50%

 20%

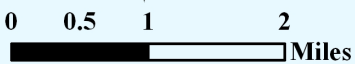
 10%

 Not Suitable

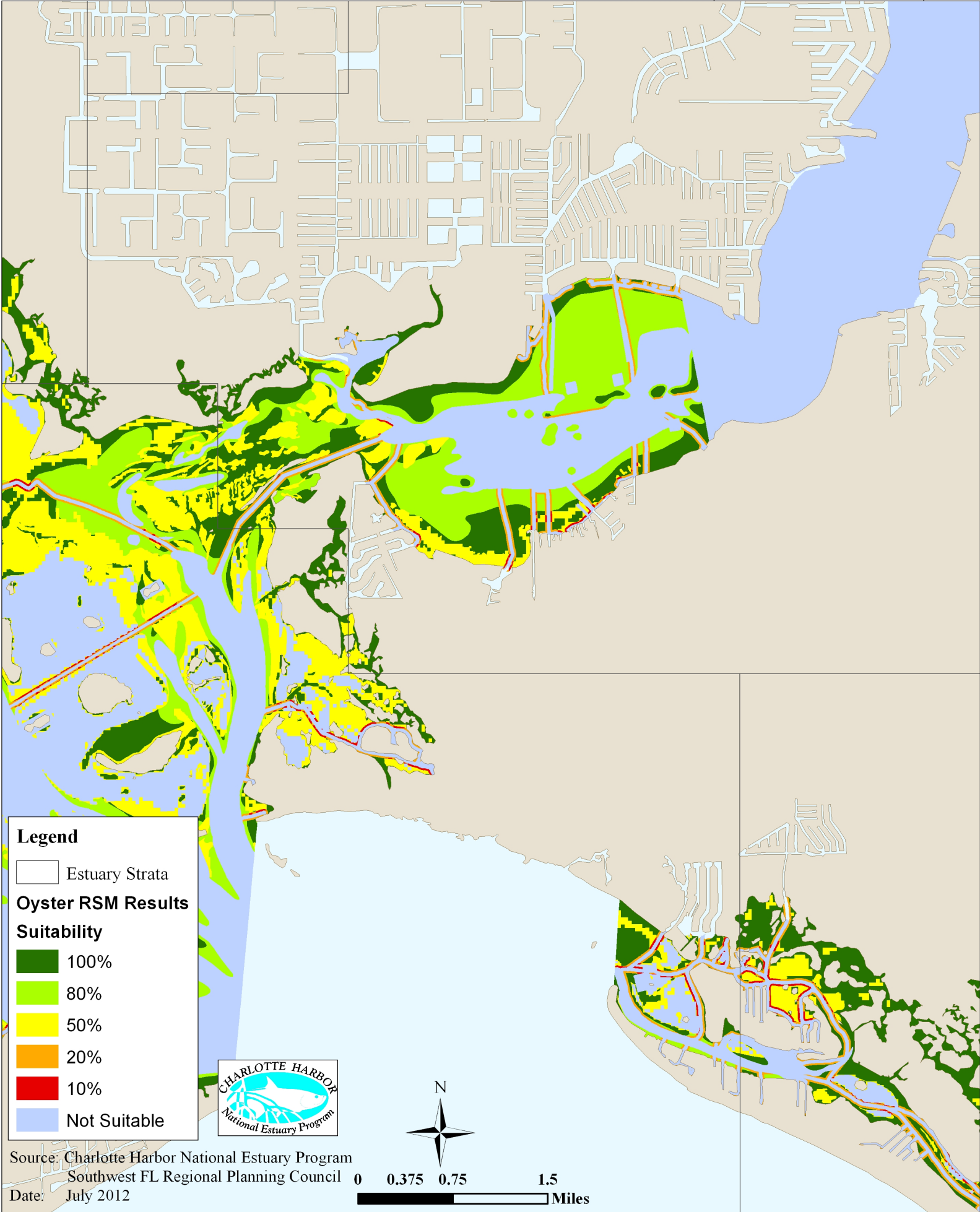


Source: Charlotte Harbor National Estuary Program
Southwest FL Regional Planning Council

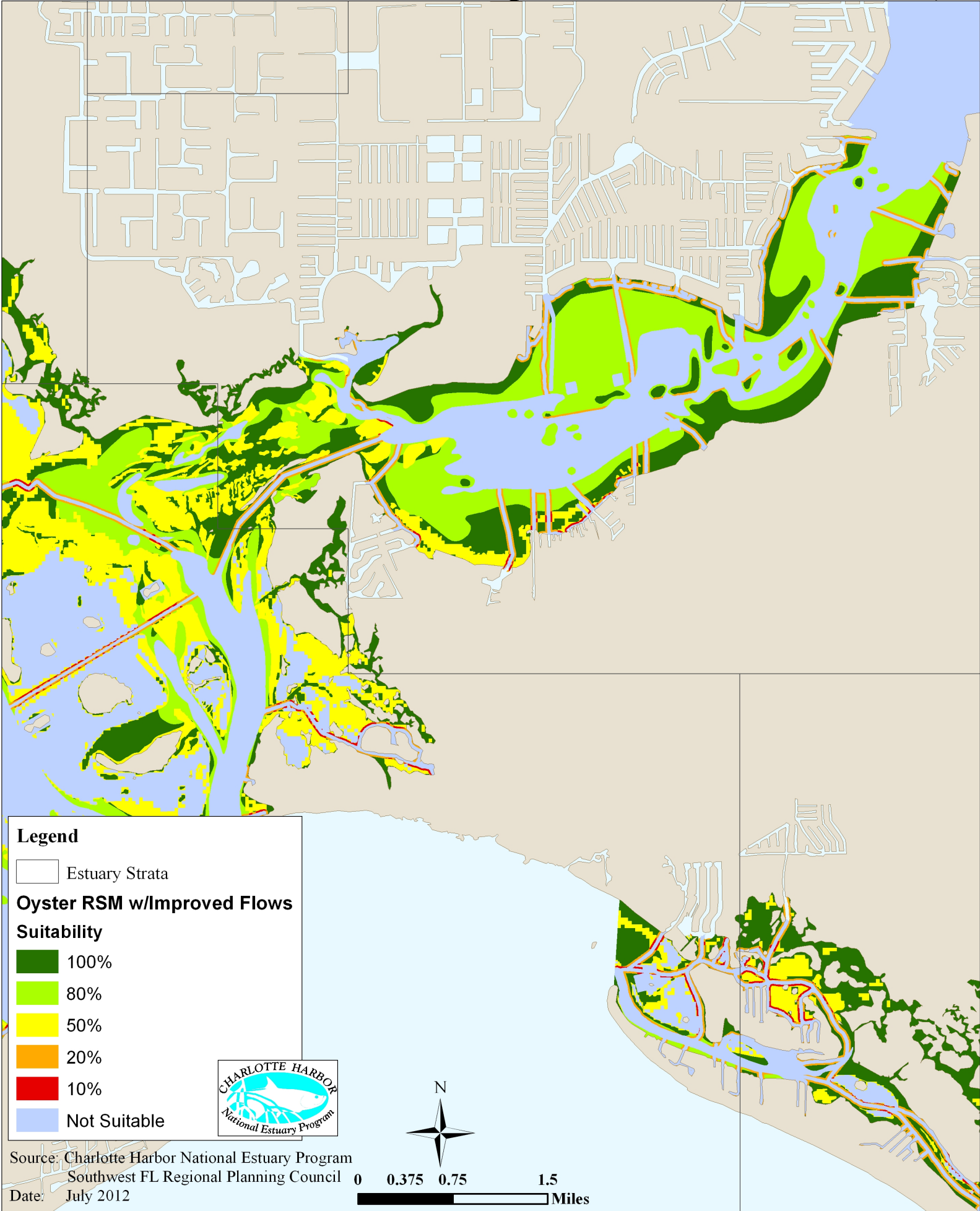
Date: July 2012



CHNEP Oyster Restoration Suitability Model Results By Estuary Tidal Caloosahatchee River - Current Flows (6,000 cfs max.)

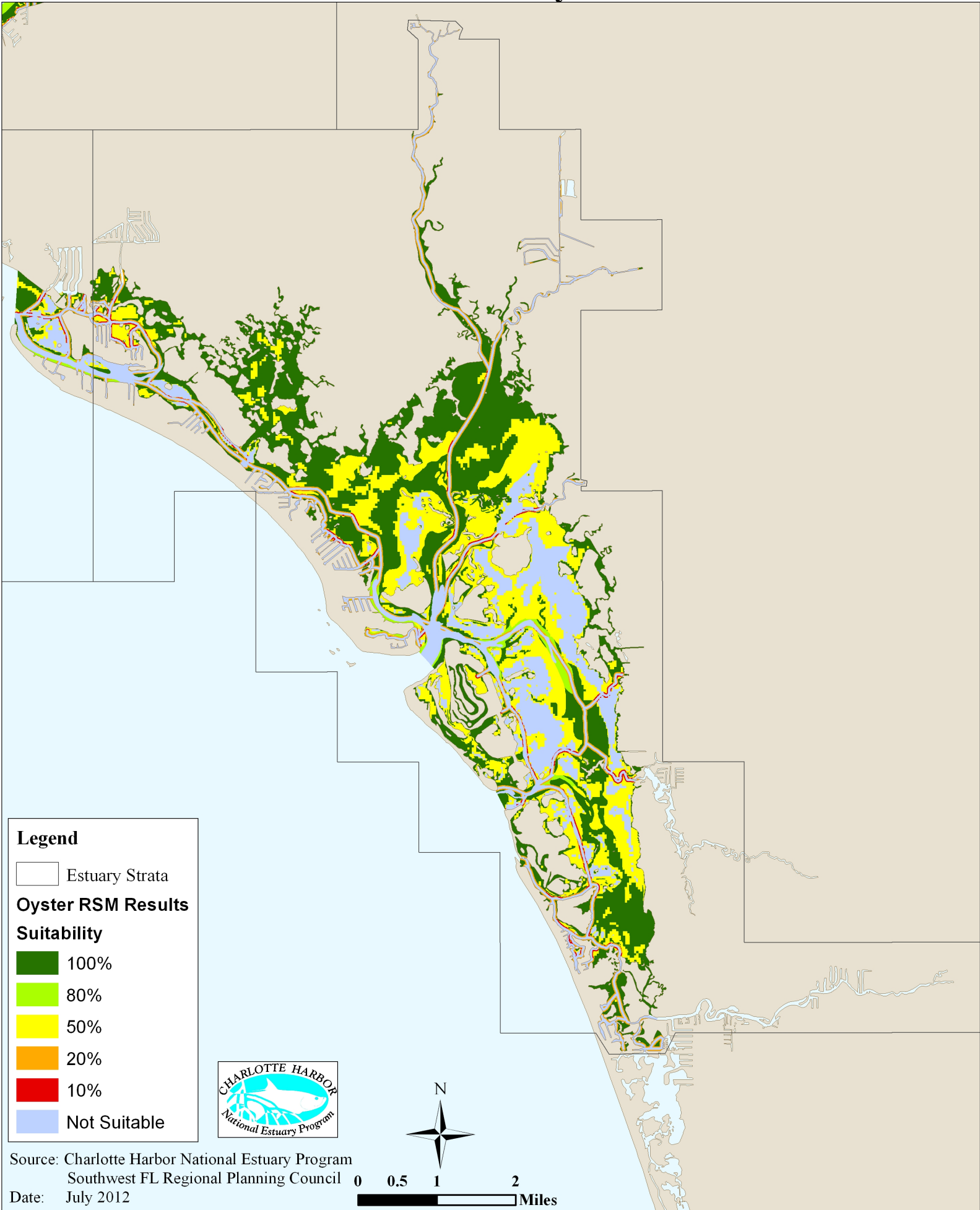


CHNEP Oyster Restoration Suitability Model Results By Estuary Tidal Caloosahatchee River - Improved Flows (3,000 cfs max.)



CHNEP Oyster Restoration Suitability Model Results by Estuary

Estero Bay









Legend

 Estuary Strata

Oyster RSM Results

Suitability

-  100%
-  80%
-  50%
-  20%
-  10%
-  Not Suitable



Source: Charlotte Harbor National Estuary Program
Southwest FL Regional Planning Council

Date: July 2012

