

Charlotte Harbor National Estuary Program Oyster Habitat Restoration Plan



Charlotte Harbor National Estuary Program Technical Report December 2012



1926 Victoria Avenue, Fort Myers FL 33901
(239) 338-2556 www.CharlotteHarborNEP.org

Prepared by:

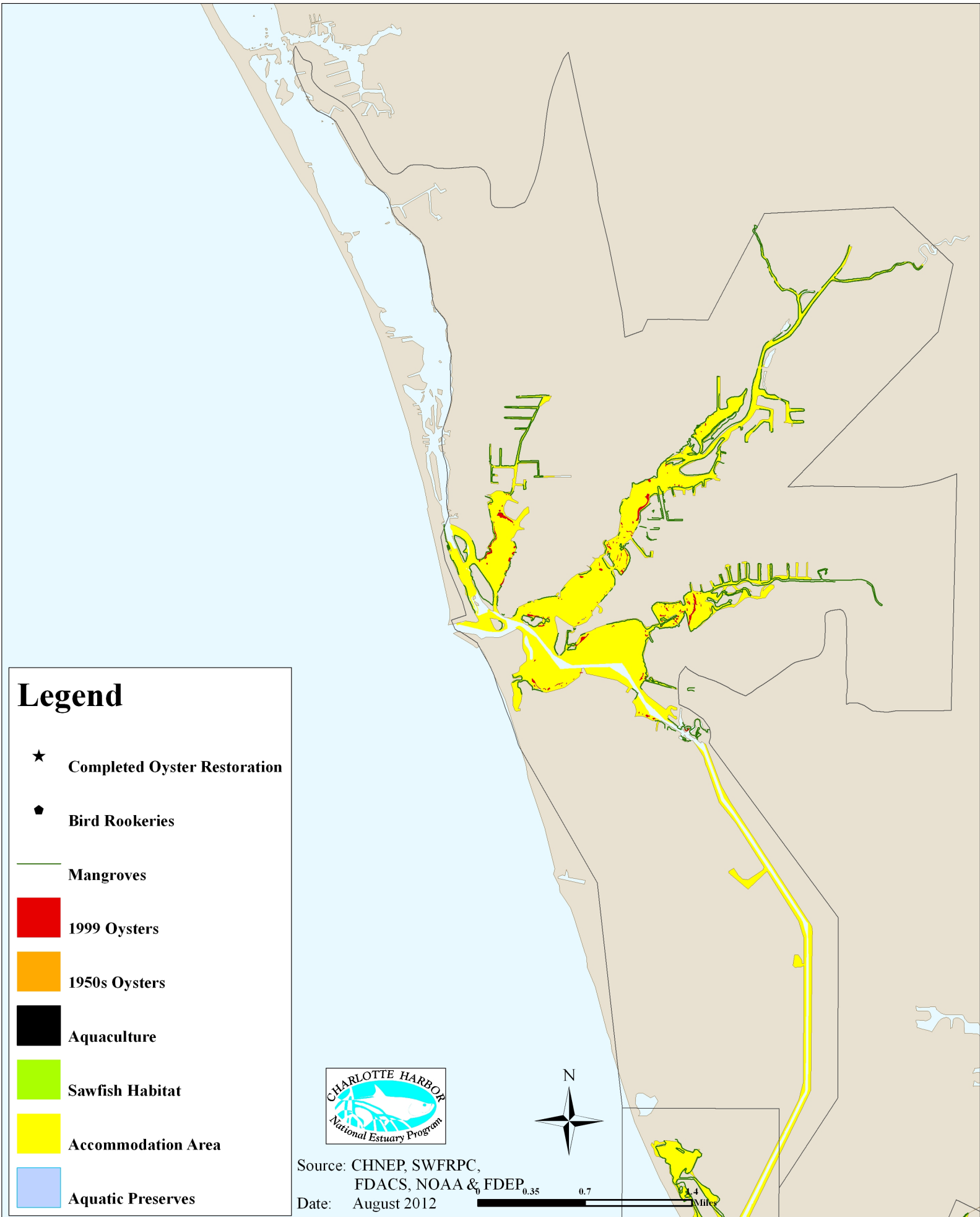
Jaime G. Boswell, Independent Contractor
Judy A. Ott, Charlotte Harbor National Estuary Program
Anne Birch, The Nature Conservancy
Daniel Cobb, Southwest Florida Regional Planning Council



Appendix E:

Additional Oyster Habitat Restoration Considerations for CHNEP Estuaries

CHNEP Oyster Restoration Additional Considerations by Estuary Dona & Roberts Bays

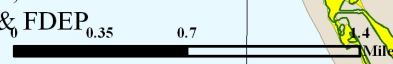


Legend

- ★ Completed Oyster Restoration
- ◆ Bird Rookeries
- Mangroves
- 1999 Oysters
- 1950s Oysters
- Aquaculture
- Sawfish Habitat
- Accommodation Area
- Aquatic Preserves

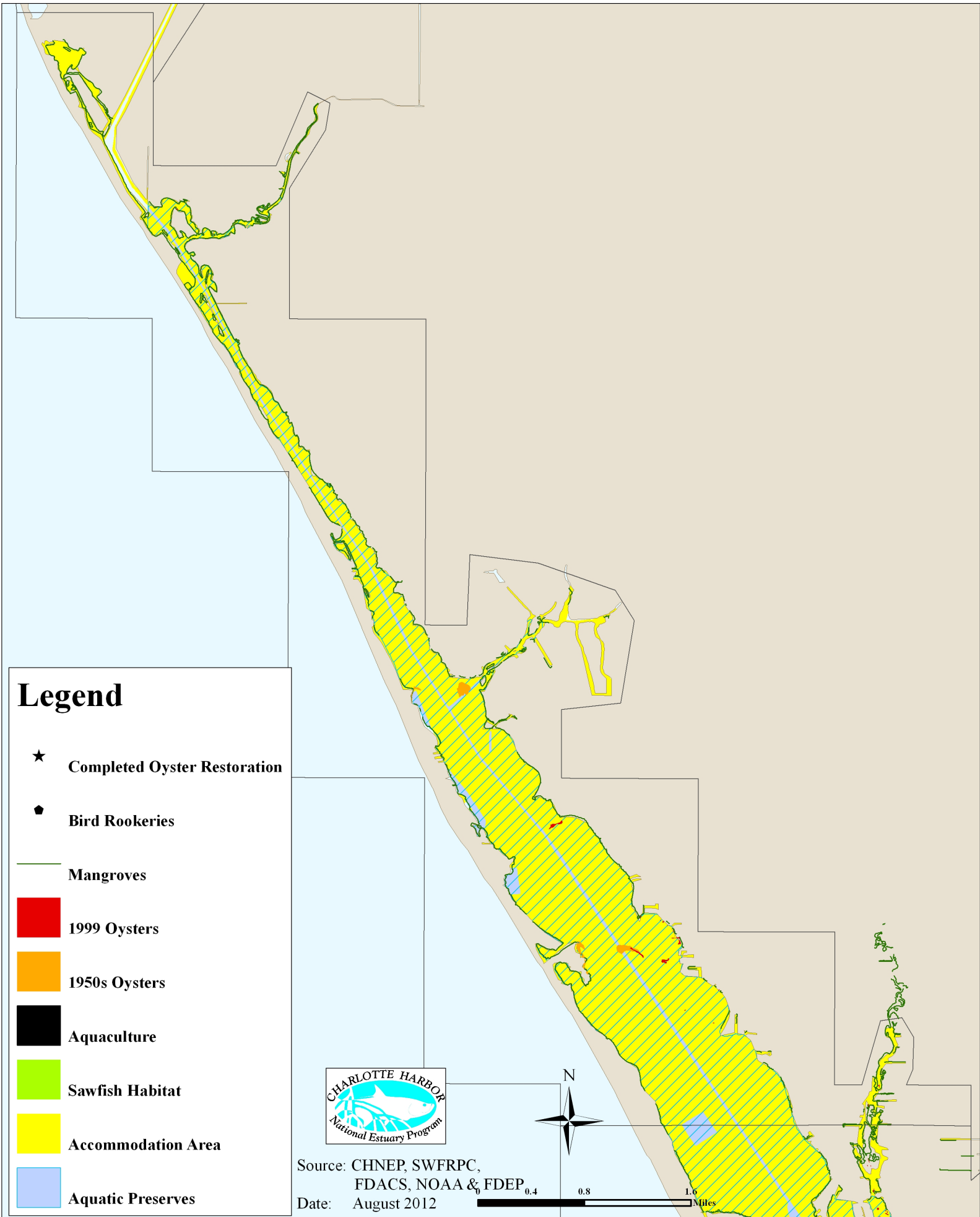


Source: CHNEP, SWFRPC,
FDACS, NOAA & FDEP
Date: August 2012



CHNEP Oyster Restoration Additional Considerations by Estuary

Upper Lemon Bay



Legend

★ Completed Oyster Restoration

◆ Bird Rookeries

— Mangroves

■ 1999 Oysters

■ 1950s Oysters

■ Aquaculture

■ Sawfish Habitat

■ Accommodation Area

■ Aquatic Preserves



Source: CHNEP, SWFRPC, FDACS, NOAA & FDEP

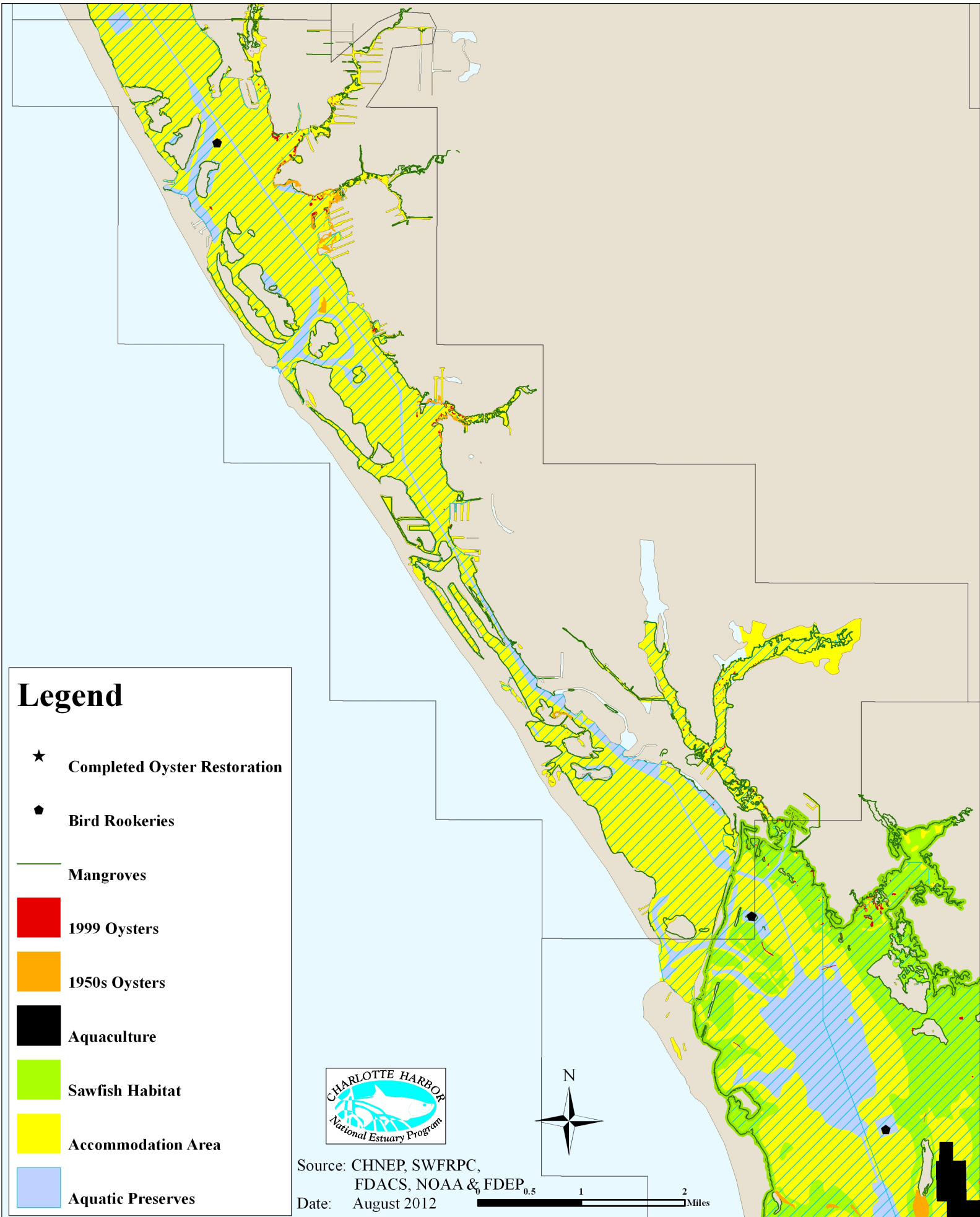
Date: August 2012



0 0.4 0.8 1.6 Miles

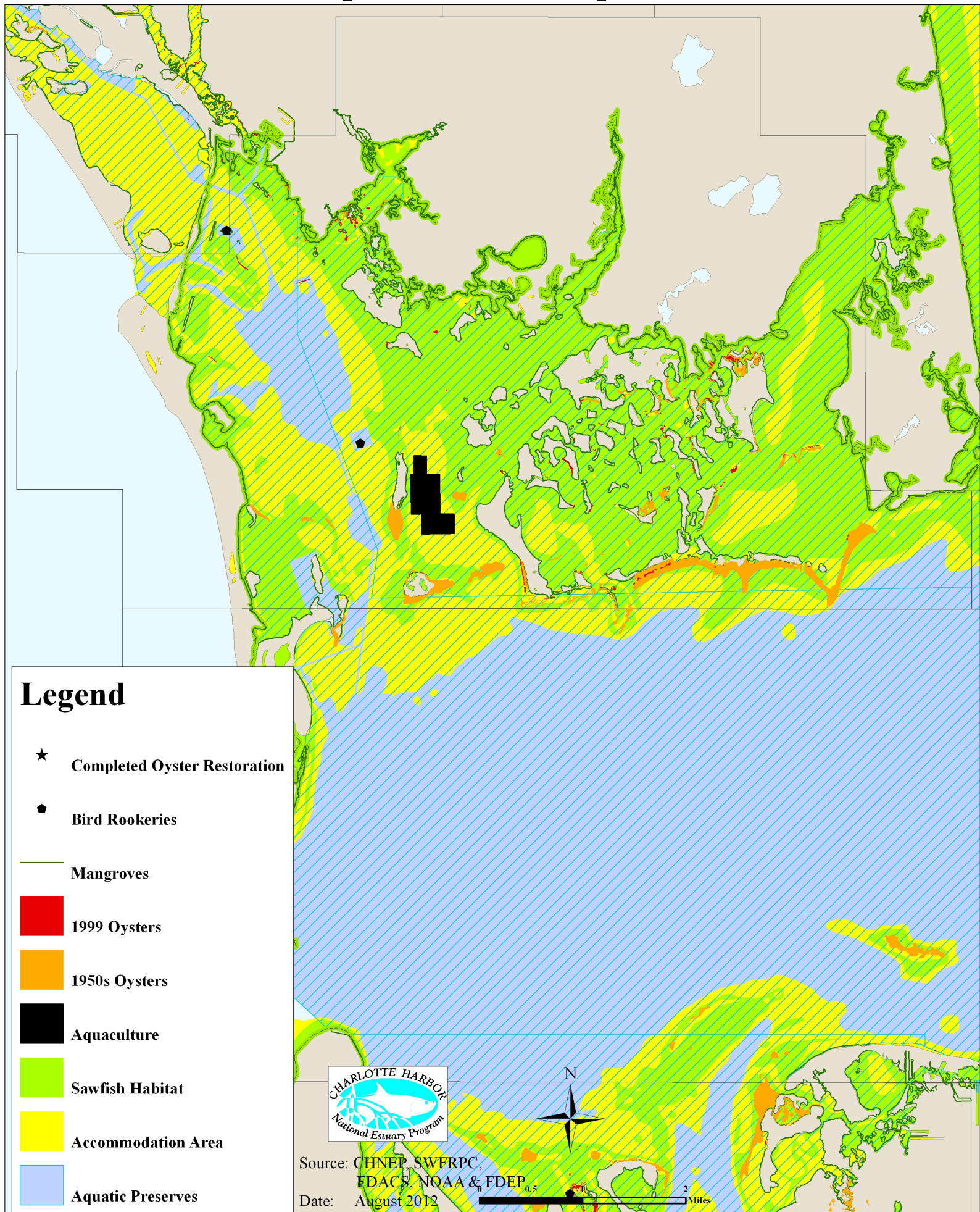
CHNEP Oyster Restoration Additional Considerations by Estuary

Lower Lemon Bay



CHNEP Oyster Restoration Additional Considerations by Estuary

Gasparilla Sound-Cape Haze



Legend

★ Completed Oyster Restoration

● Bird Rookeries

Mangroves

1999 Oysters

1950s Oysters

Aquaculture

Sawfish Habitat

Accommodation Area

Aquatic Preserves



Source: CHNEP, SWFRPC, EDACS, NOAA & FDEP

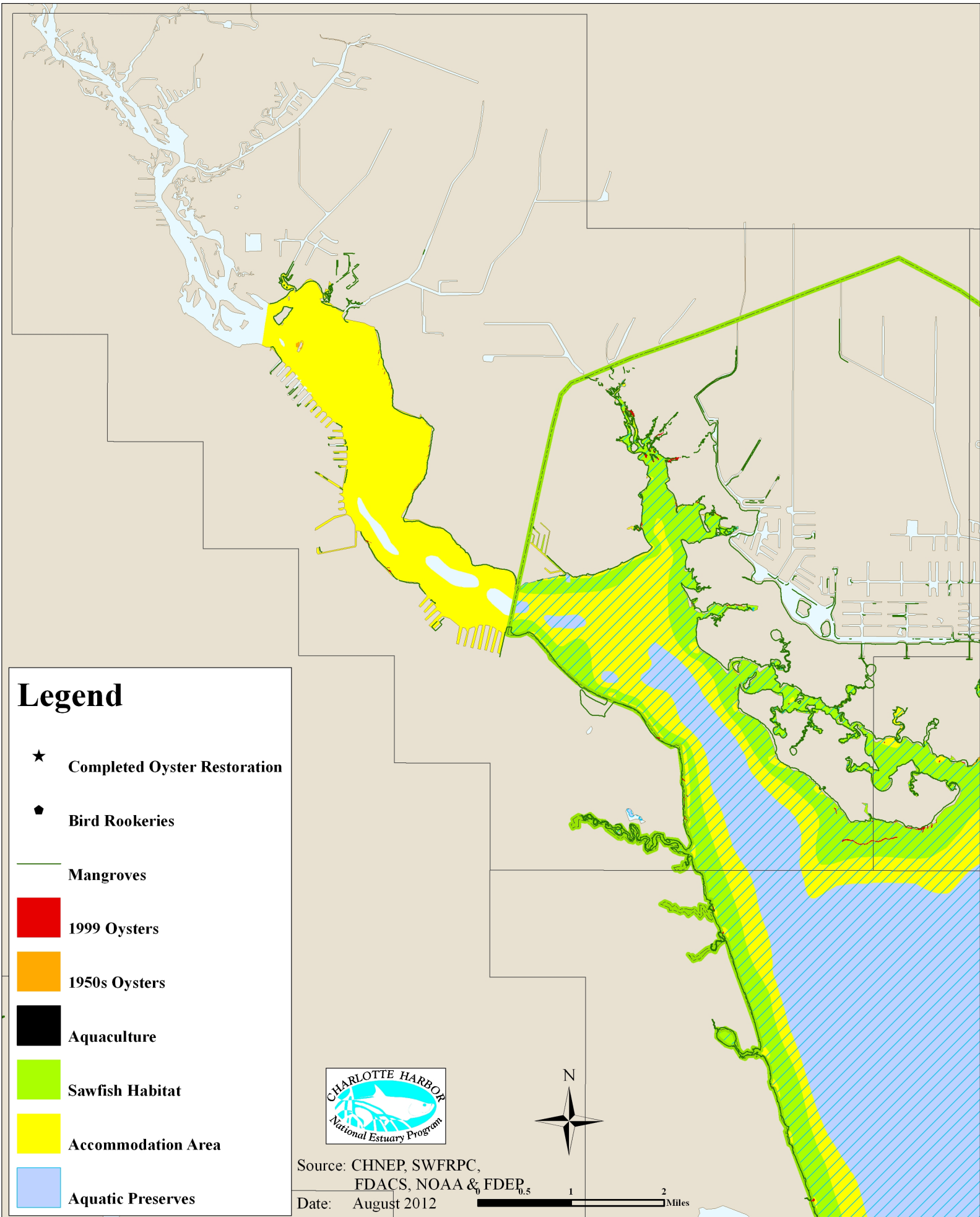
Date: August 2012

N

0 0.5 2 Miles

CHNEP Oyster Restoration Additional Considerations by Estuary

Tidal Myakka River



Legend

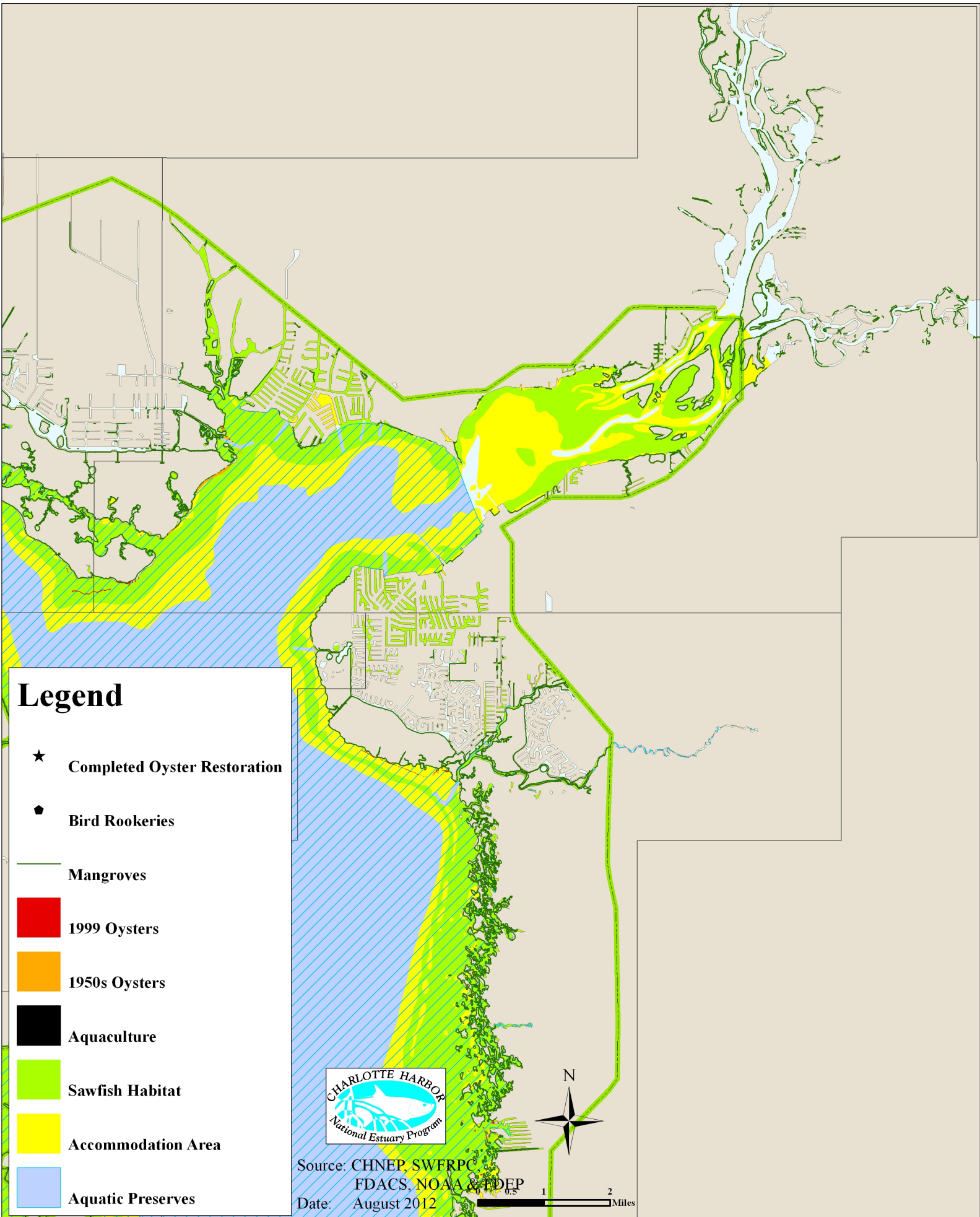
- ★ Completed Oyster Restoration
- Bird Rookeries
- Mangroves
- 1999 Oysters
- 1950s Oysters
- Aquaculture
- Sawfish Habitat
- Accommodation Area
- Aquatic Preserves



Source: CHNEP, SWFRPC, FDACS, NOAA & FDEP
Date: August 2012

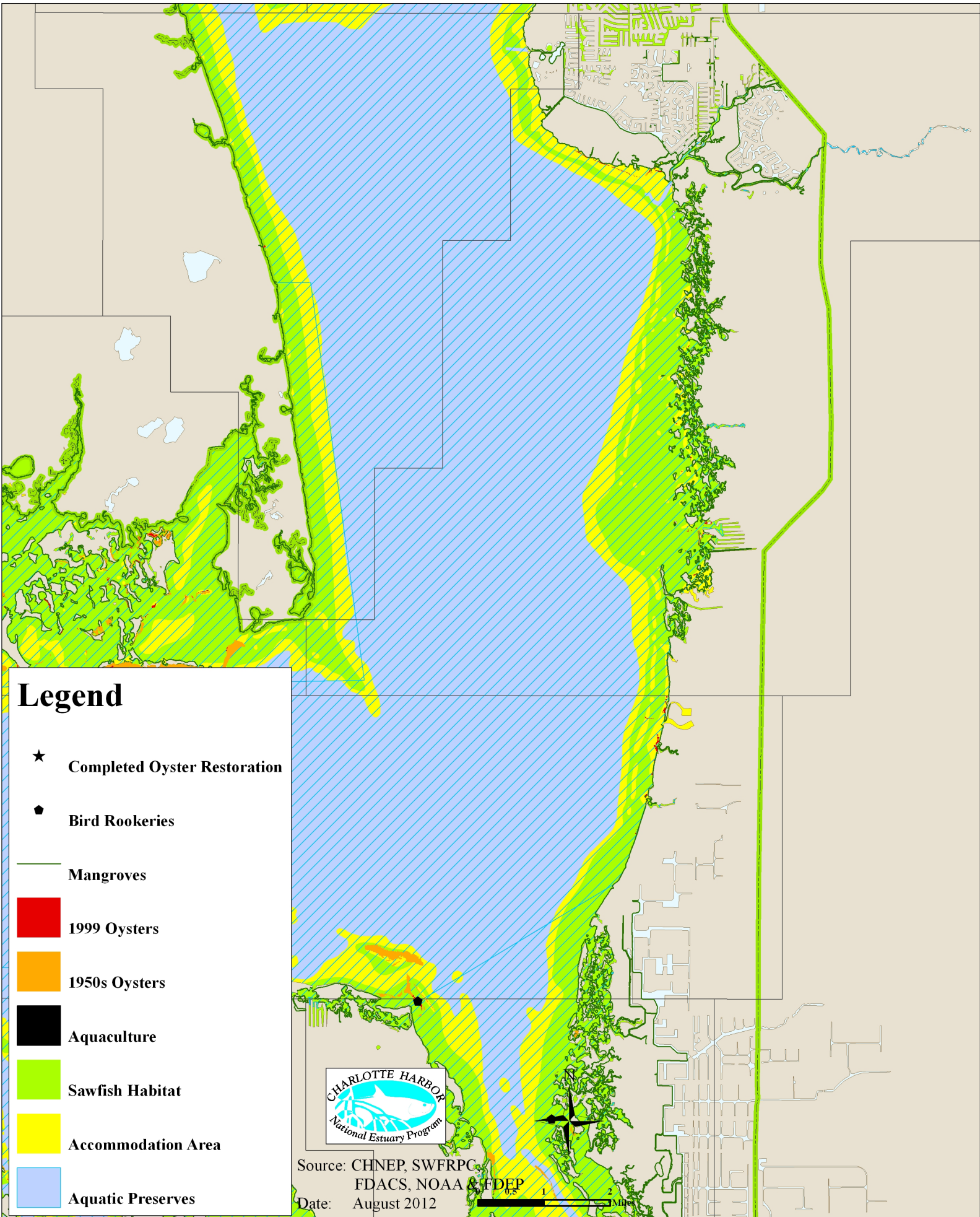


CHNEP Oyster Restoration Additional Considerations by Estuary Tidal Peace River



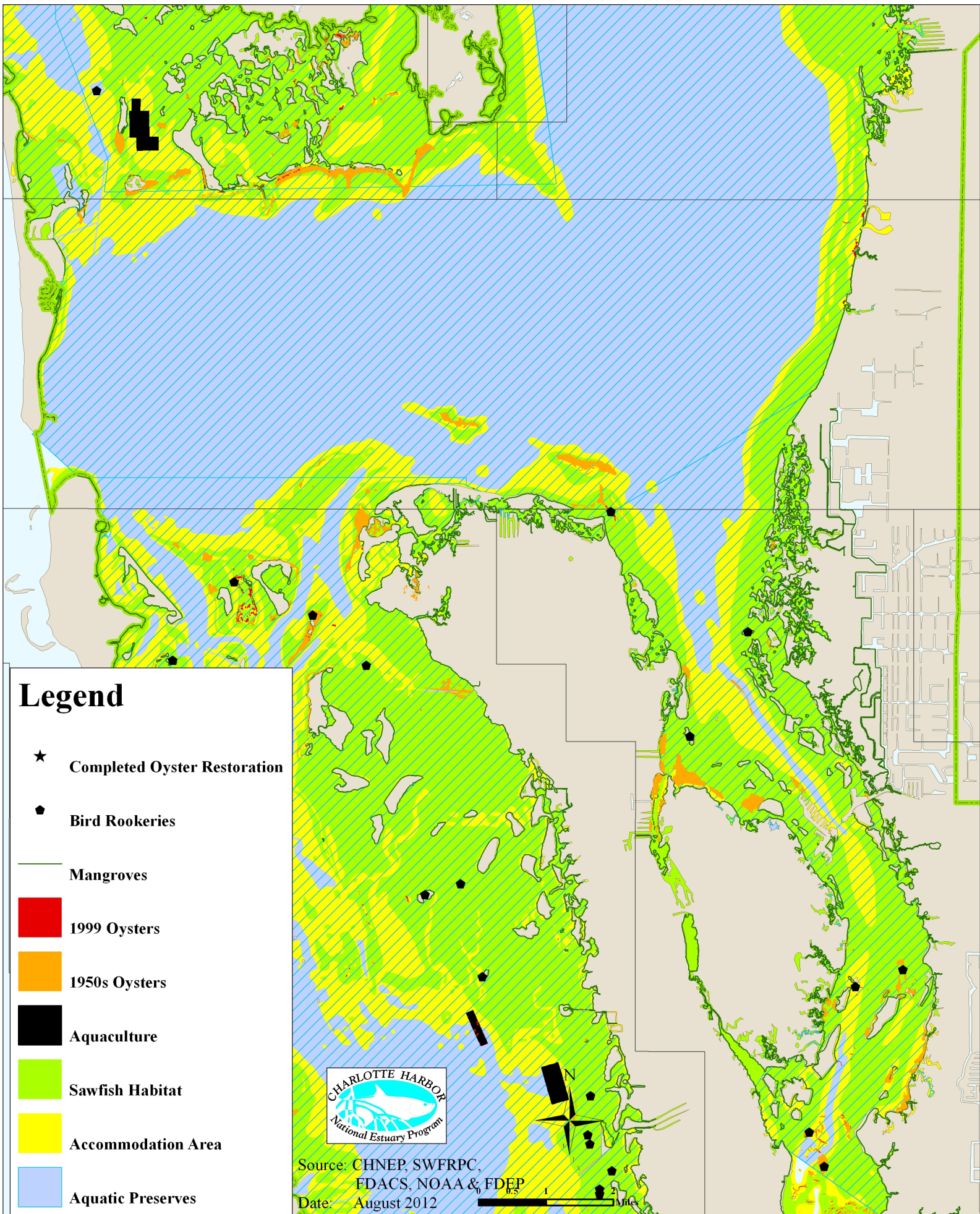
CHNEP Oyster Restoration Additional Considerations by Estuary

Charlotte Harbor West Wall & East Wall

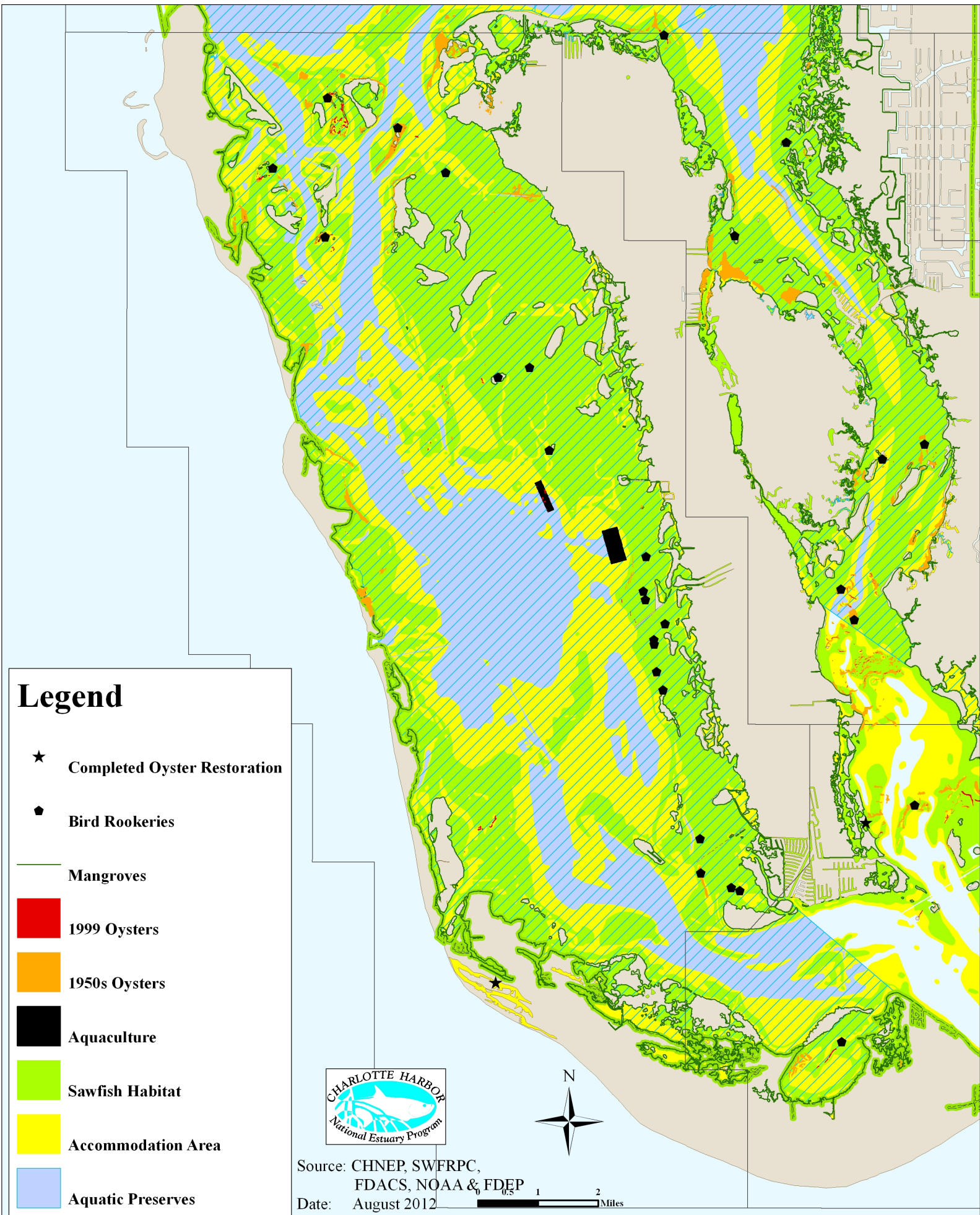


CHNEP Oyster Restoration Additional Considerations by Estuary

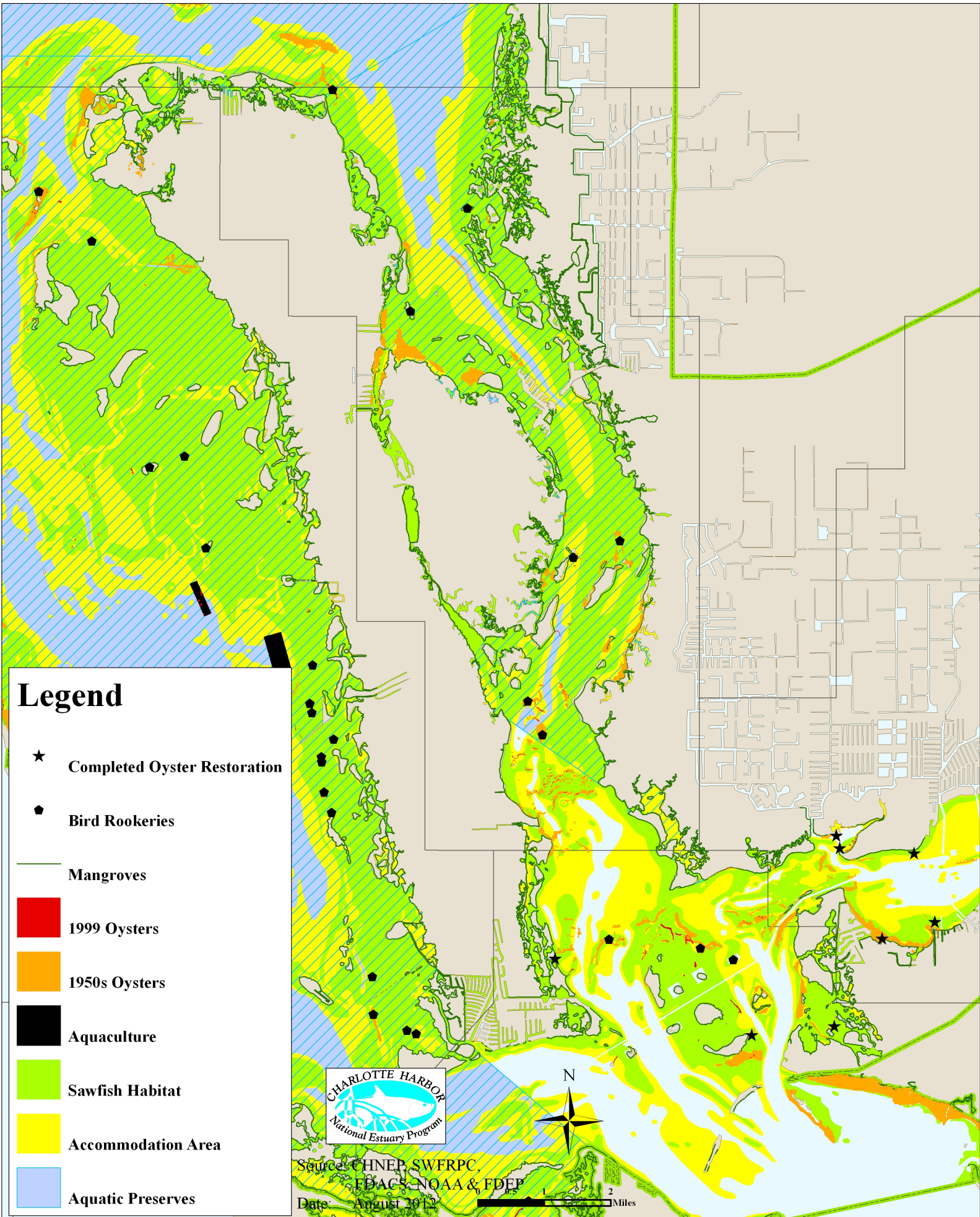
Charlotte Harbor Proper



CHNEP Oyster Restoration Additional Considerations by Estuary Pine Island Sound



CHNEP Oyster Restoration Additional Considerations by Estuary Matlacha Pass



Legend

★ Completed Oyster Restoration

● Bird Rookeries

Mangroves

1999 Oysters

1950s Oysters

Aquaculture

Sawfish Habitat

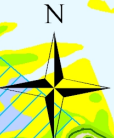
Accommodation Area

Aquatic Preserves

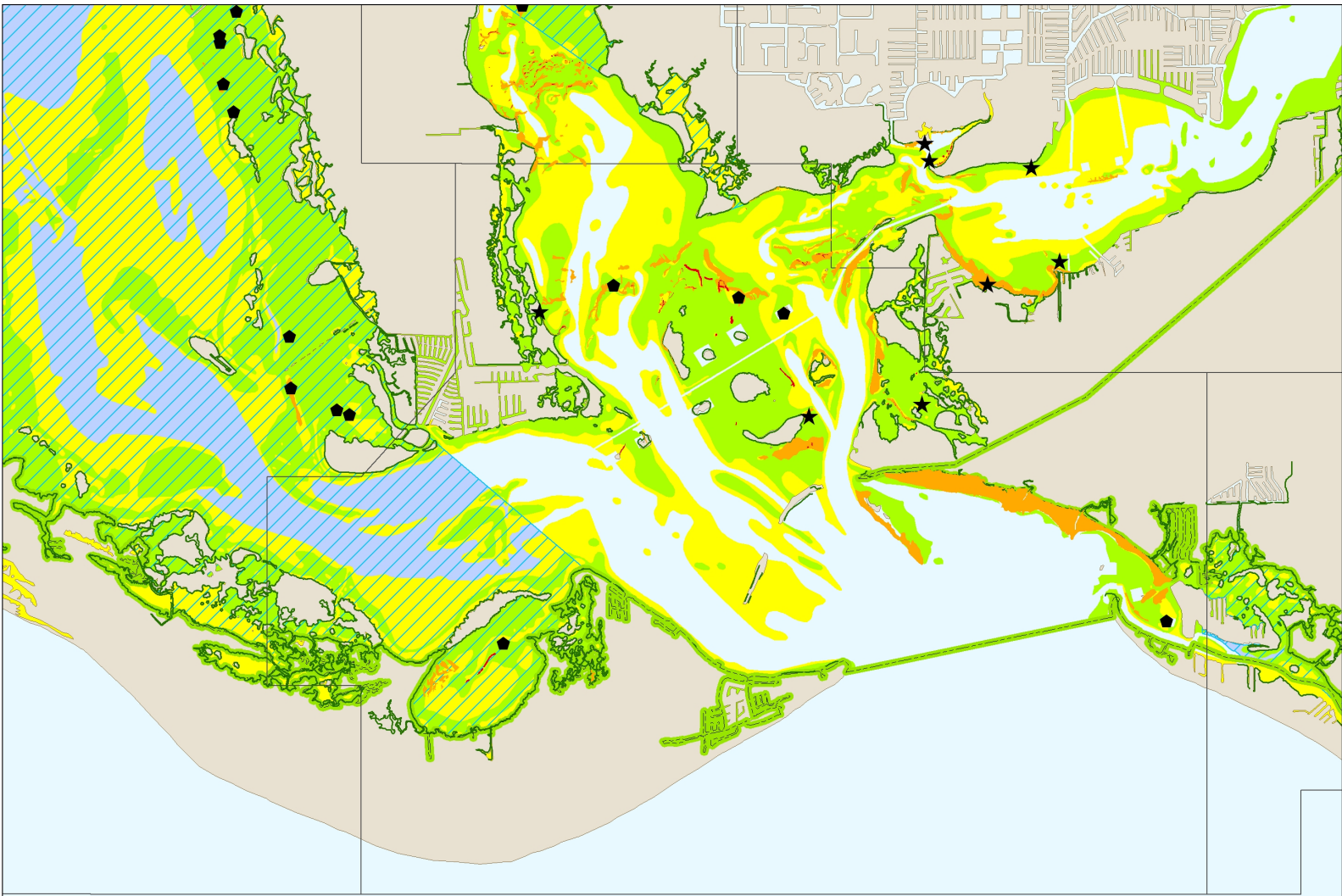


Source: CHNEP, SWERP, FDACS, NOAA & FDEP

Date: August 2012



CHNEP Oyster Restoration Additional Considerations by Estuary San Carlos Bay



Legend

★ Completed Oyster Restoration

● Bird Rookeries

Mangroves

1999 Oysters

1950s Oysters

Aquaculture

Sawfish Habitat

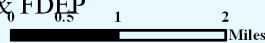
Accommodation Area

Aquatic Preserves

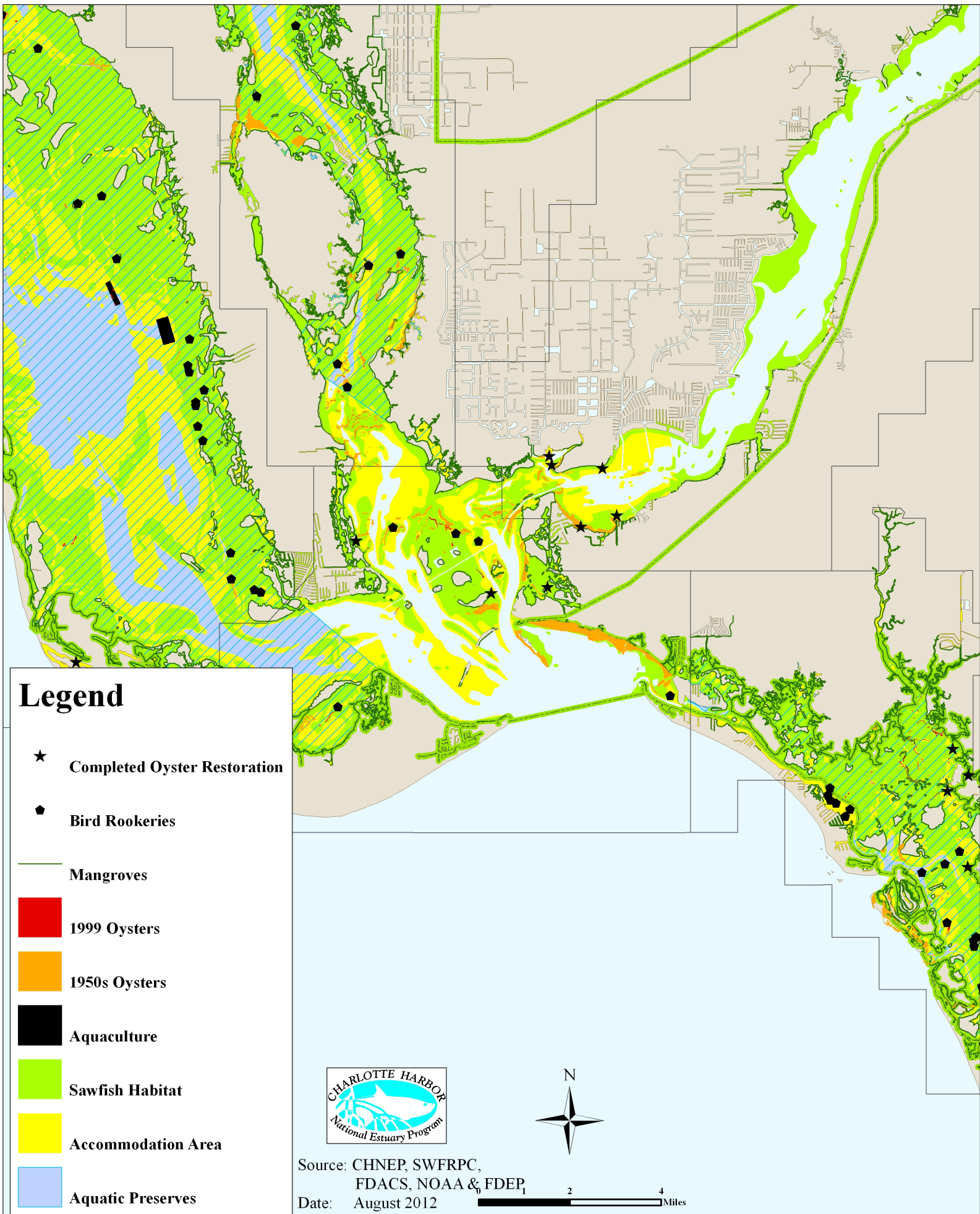


Source: CHNEP, SWFRPC, FDACS, NOAA & FDEP

Date: August 2012



CHNEP Oyster Restoration Additional Considerations by Estuary Tidal Caloosahatchee River



Legend

★ Completed Oyster Restoration

● Bird Rookeries

— Mangroves

Red 1999 Oysters

Orange 1950s Oysters

Black Aquaculture

Light Green Sawfish Habitat

Yellow Accommodation Area

Blue Aquatic Preserves



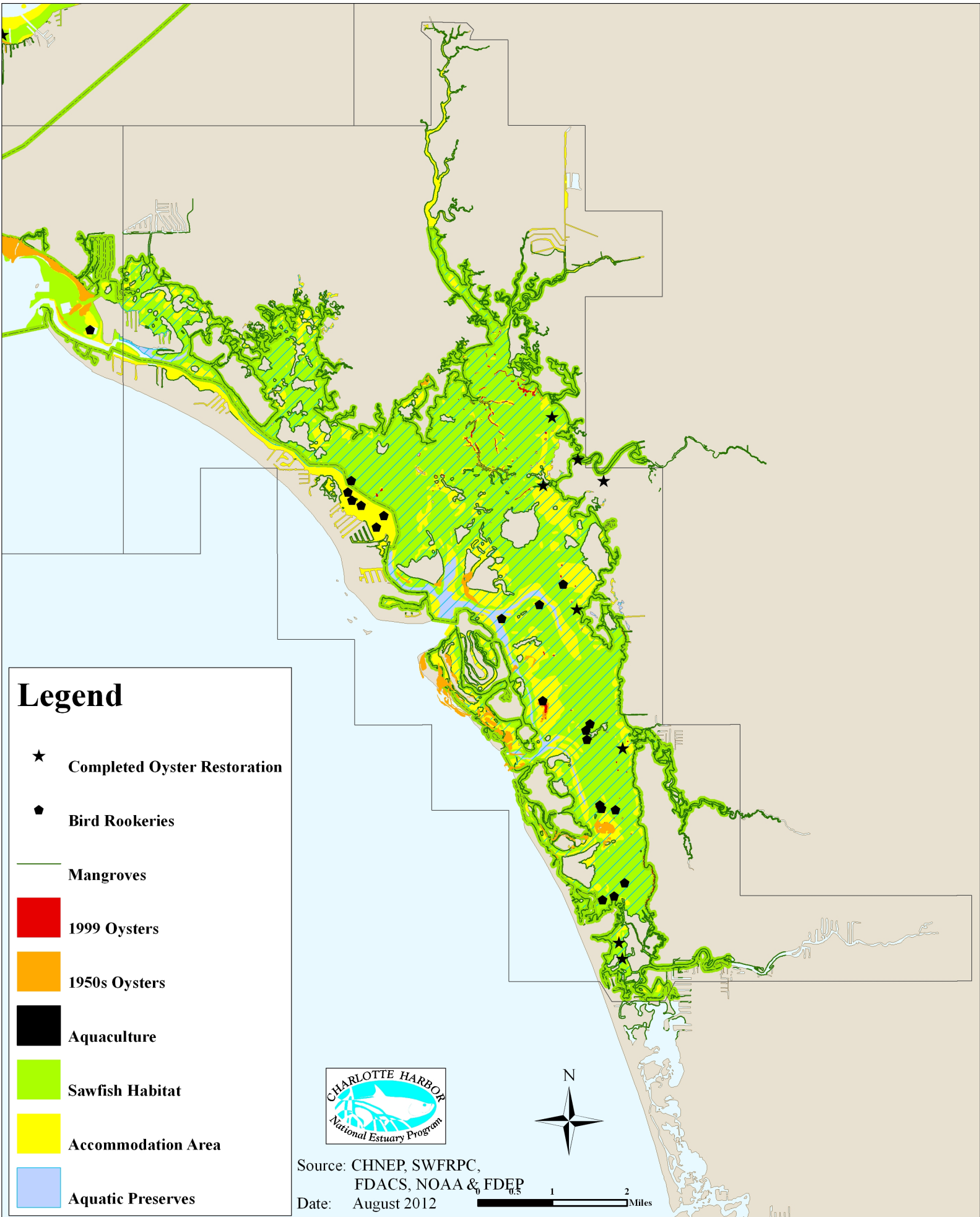
Source: CHNEP, SWFRPC, FDACS, NOAA & FDEP

Date: August 2012

0 2 4 Miles

CHNEP Oyster Restoration Additional Considerations by Estuary

Estero Bay



Legend

★ Completed Oyster Restoration

● Bird Rookeries

Mangroves

1999 Oysters

1950s Oysters

Aquaculture

Sawfish Habitat

Accommodation Area

Aquatic Preserves



Source: CHNEP, SWFRPC, FDACS, NOAA & FDEP

Date: August 2012

