

# Pineland Site Complex

Lee County

## Critical Historical Resources

### Purpose for State Acquisition

Among the rich remains of the Calusa and earlier peoples around Charlotte Harbor, the Pineland Site Complex, with its large mounds and canals and well-preserved remains dating back almost 2000 years, may be the most important—but it is also one of the more desirable areas for development on Pine Island. The Pineland Site Complex project will protect the archaeological site and mangrove swamps near it, preserving a link of natural land to the Charlotte Harbor State Reserve, giving archaeologists the opportunity to continue their research at the site, and giving the public an opportunity to learn how the ancient inhabitants of this fast-growing area lived.

### Manager

The University of Florida Foundation.

### General Description

This internationally significant archaeological site was inhabited by the Calusa for over a thousand years, and includes substantial midden mounds, a burial mound, remnants of an Indian-engineered canal, and buried deposits containing organic remains. Natural habitats within the project area include tidal saltern, a tidal creek, intertidal shoreline, and a large tract of mangrove wetland. Ponds on the property are important to white ibis, egrets, herons, and wood stork. The intertidal shoreline has an eastern oyster bar community, numerous species of gastropods and bivalves, and black and red mangroves. Shoreline shell mounds exhibit a distinctive plant community. A third of the project area is pasture land. There are several species of exotic plants in the project. It is threatened by residential construction on the mounds. The project is adjacent to the Charlotte Harbor Aquatic Preserve.

### Public Use

The Florida Museum of Natural History plans to provide

<b>Pineland Site Complex</b> FNAI Elements
no rare species are associated with the project

a research and educational center on the site.

### Acquisition Planning

Essential parcels include all ownerships except: American Bible Church, Sapp, Samadani, and Celec. Several houses, built on significant archaeological mounds, are included within the project boundary. These tracts with improvements should be acquired, if possible. If not, life-estates should be pursued. One tract has been acquired with Emergency Archaeological Trust funds. Another is being negotiated as a conservation easement. Negotiations on the core parcel have begun.

On 10/15/1998, the LAMAC revised the designation of the following parcels to essential: The Cloisters and Jessy Chris. On 12/10/2010, ARC voted to move this project from the Critical Natural Lands category to a new category called, "Critical Historical Resources."

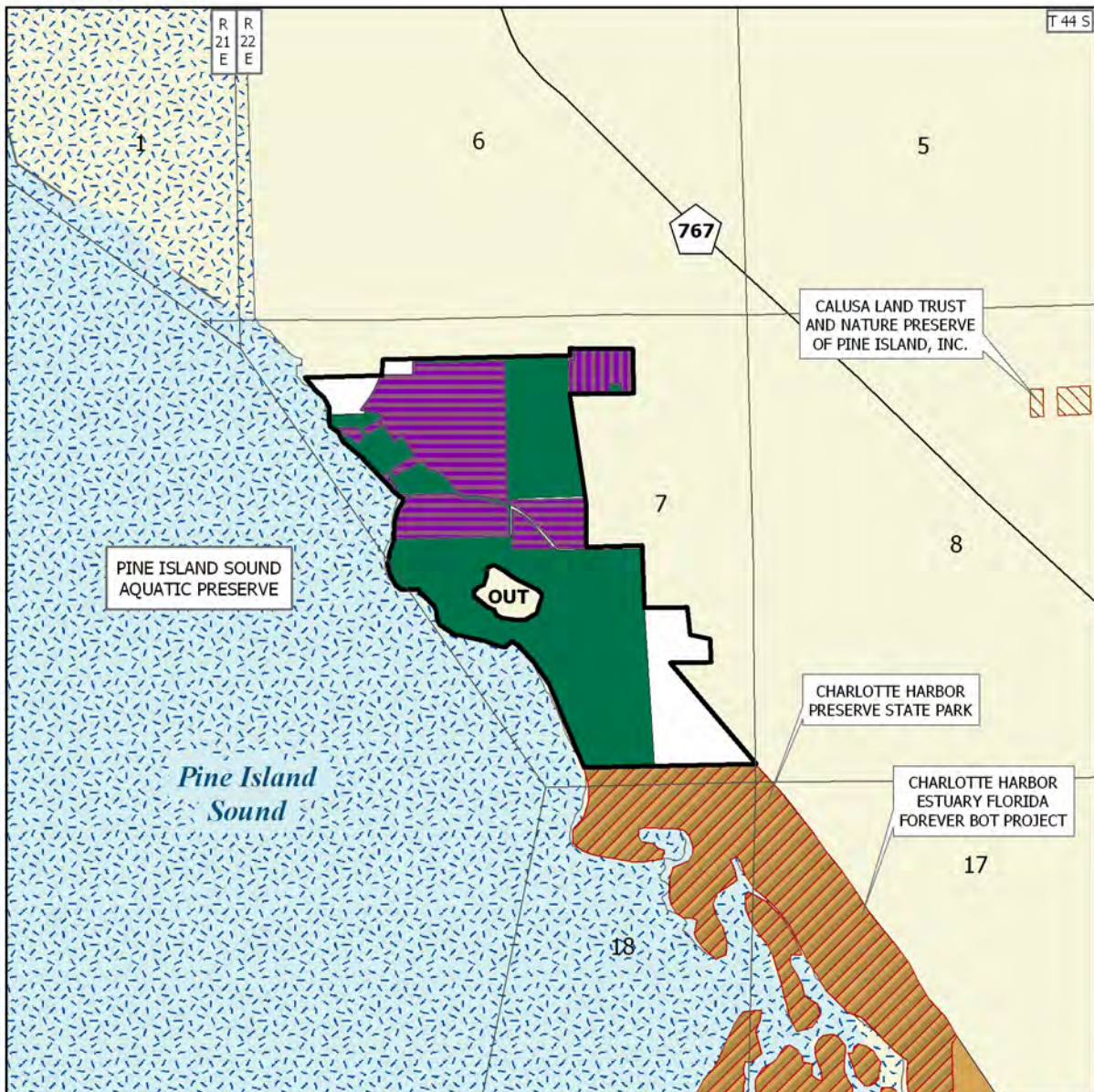
### Coordination

The Archeological Conservancy was an intermediary in the acquisition of the acreage that has been acquired. In addition, the University of Florida Foundation, Lee County, and Calusa Land Trust are considered partners on this project.

### Management Policy Statement

The primary objective of management of the Pineland Site Complex project is to preserve the Pineland Site Complex, an archaeological site of national significance. Achieving this objective will allow further scientific research on this site and provide the public with

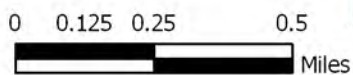
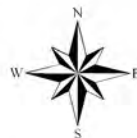
<b>Placed on List</b>	<b>1996</b>
<b>Project Area (GIS Acres)</b>	<b>211</b>
<b>Acres Acquired (GIS)</b>	<b>63</b>
<b>at a Cost of</b>	<b>\$1,355,000</b>
<b>Acres Remaining (GIS)</b>	<b>148</b>
<b>with Estimated (Tax Assessed) Value of</b>	<b>\$1,308,148</b>



## PINELAND SITE COMPLEX

### LEE COUNTY

- Florida Forever BOT Project Boundary
- Acquired for Conservation (Fee Simple)
- Acquired for Conservation (Less-Than-Fee)
- Essential Parcel(s) Remaining
- Other Florida Forever BOT Projects
- State Owned Lands
- Other Conservation Lands
- State Aquatic Preserves



OCTOBER 2009

## Pineland Site Complex

opportunities to learn about the prehistoric inhabitants of Pine Island.

The project should be managed under the single-use concept: management activities should be directed toward the preservation of the archaeological resources of the site. Consumptive uses such as hunting or logging should not be permitted. Managers should control public access to the project; limit public motor vehicles to a small part of the area; thoroughly inventory the resources; and monitor management activities to ensure that they are actually protecting the archaeological resources and maintaining or improving the quality of any natural communities, such as mangrove swamps, on site. Managers should limit the number and size of recreational facilities, such as hiking trails, ensure that they avoid the most sensitive resources, and site them in already disturbed areas when possible.

The project area includes the known components of the Pineland Site Complex and therefore has the configuration to achieve its primary objective.

### Management Prospectus

**Qualifications for state designation** The Pineland Site Complex is an internationally significant archaeological site listed on the National Register of Historic Places; it qualifies as a state historic site.

**Manager** The University of Florida Foundation is recommended as the lead manager.

**Conditions affecting intensity of management** needs will include maintenance (fences, weed and exotic plant control, etc.) and security (periodic patrol of the more remote wetlands areas, active surveillance of the central site area).

**Timetable for implementing management and provisions for security and protection of infrastructure** Within the first year after acquisition, initial or intermediate activities will concentrate on site security, resource

inventory, and property maintenance (cleaning up of dumped materials, exotic plant eradication, etc.). A master plan (now being drafted) will be in place to guide a phased development process leading to a permanent research/education center open regularly to the public within five years. Initial development will concentrate on public safety, security, and resources assessment, including inventory of endangered and threatened species. A plan for conservation and enhancement of significant habitats identified in this process will be developed.

**Revenue-generating potential** In addition to the income produced by the invested endowed funds, the Center's director will be responsible for bringing in grant funds from public and private sources and for establishing and maintaining reciprocal relationships with local and regional schools, colleges, universities, museums, nature centers, and conservation societies. With the establishment of a visitor's center, a book store and gift shop will be operated to offset expenses of center operation and provide funds to enhance center programs. A local support organization has already been formed and is operating under the auspices of the University of Florida Foundation. It will continue to raise funds to support specific center programs and initiatives.

**Cooperators in management activities** Activities to enhance natural resources will be undertaken in consultation with qualified conservation personnel, including staff from the Lee County Division of Environmental Sciences and the cooperating manager, the DEP Aquatic and State Buffer Preserve.

*Updated 2/27/2012*

### Management Cost Summary

Category	Startup	Development	Implementation
Source of Funds	Grants	Grants	Grants
Salary	\$44,450	\$45,809	\$71,752
OPS	\$0	\$0	\$0
Expense	\$1,000	\$1,200	\$1,500
OCO	\$0	\$0	\$0
FCO	\$0	\$0	\$0
TOTAL	\$45,450	\$47,009	\$74,252