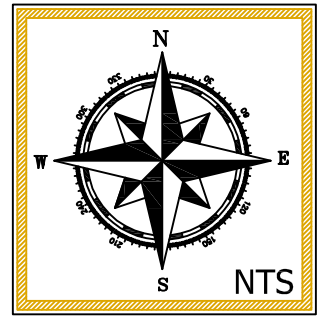




WINTER HAVEN

The Chain of Lakes City



Access and Facilities

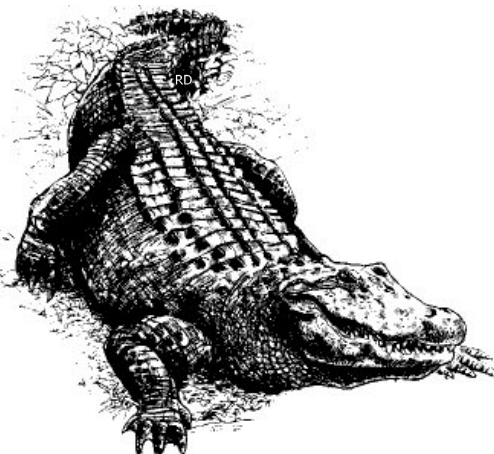
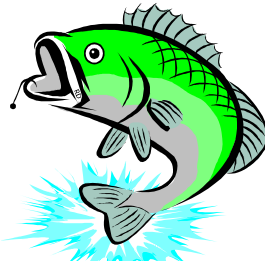
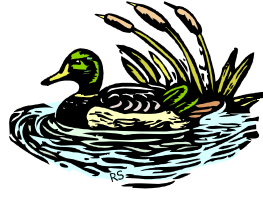
BE A RESPONSIBLE BOATER

Boaters can make a big difference in protecting the waters they use by properly handling fuel and motor oils, sewage, garbage and regular boat maintenance;

- Use on-shore garbage and restroom facilities as much as possible.
- Keep a sealable container for garbage on your boat.
- Never litter. Retrieve all items dropped into water, especially old fishing line. Retrieve any litter found in the water.
- Check your engine regularly to see if it is leaking oil or gas. When filling gas tanks or adding oil, be careful not to spill.
- Observe posted no-wake zones. Boaters shall observe a minimum wake speed within 150 feet of a canal mouth.
- No boats shall travel on a plane within 75 feet from any fixed structure.
- Avoid docking or beaching where plants such as reeds and grasses are located. These essential plants control erosion, filter nutrients and pollutants from the water and provide a nursery ground for many small animals and fish.
- Wash off or check your boat after you use it to prevent the spread of exotic plants to other lakes and rivers. Exotics spread easily, killing off native species and decreasing important plant and animal diversity.
- Persons under 6 years old shall wear and U.S. Coast Guard approved floatation device at all times while on board a boat.

Many people in Florida enjoy using local rivers, waterways and lakes for fishing, skiing, and relaxation. Learn to use your boat wisely, to limit your impact and help preserve our precious water resources.

*For more information about Polk County's lakes log on to www.polk.wateratlas.usf.edu



IMPORTANT PHONE NUMBERS:

- * **Winter Haven Natural Resources Division** (863) 291-5881
For general lakes information including public docks, piers, water quality concerns and to report illegal dumping activities into storm drains, lake shores or lakes.
- * **Florida Fish and Wildlife Conservation Commission (FWC)** 1-888-404-FWCC
For fishing licenses, to report illegal wildlife activities, and other Florida law enforcement.
- * **Florida Fish and Wildlife Conservation Commission (FWC) - Invasive Plant Management Section** (863) 534-7074
For aquatic plant management permits and inquiries or to report illegal lakeshore clearing or filling.
- * **Lake Region Lakes Management District (Canal Commission)** (863) 293-1441
For launch or canal related reports and inquiries, lake level and structure information.
- * **Southwest Florida Water Management District (SWFWMD)** 1-800-492-7862
For water conservation information and materials or to report illegal filling of wetland areas.
- * **Lakes Education Action Drive (LE/AD)** (863) 221-5323
For lake related educational materials and information.
- * **Winter Haven Police Department** (863) 291-5858 (non-emergency) or **911 (emergency)**
- * **Polk County Sheriff's Office** (863) 533-0344 (non-emergency) or **911 (emergency)**

-LEGEND-

- U.S. HIGHWAY
- STATE ROAD
- COUNTY ROAD
- LAKES OF THE SOUTH CHAIN
- LAKES OF THE NORTH CHAIN
- RESTROOM
- BOAT RAMP
- PARK

* This map brought to you by the City of Winter Haven Technical Services Division.